

L WOOLTON L2 TIMES

MAY 2026 Issue 123



SELL YOUR HOME WITH HOMESURE PROPERTY

The most comprehensive estate agency package on the market,
from the highest-rated local agent



Market-leading photography

Floorplans and 360° virtual walkthrough tours as standard

Promoted via all available online platforms

Our in-office mortgage advice team qualify buyers,
to make sure every offer is genuine

NO TIE-IN PERIOD
NO SALE, NO FEE
OPEN LATE & WEEKENDS

32 Allerton Road,
Woolton, L25 7RG
0151 722 2222

homesureproperty.co.uk





BIRKENHEAD SCHOOL

HMC INDEPENDENT DAY SCHOOL
GIRLS AND BOYS EARLY YEARS TO SIXTH FORM

Making the Journey Simple

SENIORS ASSESSMENT DAYS (2027 Entry)

Monday 8th - Wednesday 10th June

For Year 5 pupils. Seniors is over-subscribed and early application is strongly encouraged.



PREP TASTER DAYS

Taking place during May & June



See website for upcoming dates.



**FREE SCHOOL TRAVEL
TO AND FROM LIVERPOOL**

Birkenhead
School is just
15 minutes from
Liverpool City
Centre

HMC

  www.birkenheadschoo.co.uk

Leading independent school for Wirral, Liverpool, Cheshire & North Wales

Birkenhead School, 58 Beresford Road, Oxtou, Wirral, CH43 2JD

*Free travel for Liverpool-based families on Birkenhead School bus services from Reception to Year 6 throughout their entire Prep School journey. New entrants into Year 7 to Upper Sixth will be eligible for free transport for the first year.

Scotch Beef Shop

Woolton

TELEPHONE ORDERS WELCOME CALL 0151 428 1281



23 Woolton Street, Woolton Village L25 5NH

Telephone: 0151 428 1281

Email: scotchbeefshop@gmail.com

www.thescotchbeefshop.co.uk



Margaret Davies
Editor & Publisher

L25 WOOLTON TIMES
SOUTHLIVERPOOL TIMES

Margaret's Publishing

mdaviesimes@gmail.com

Mobile : 07977706211

Telephone: 0151 428 2231

www.margaretpublishing.co.uk



© Copyright Margarets Publishing
All rights reserved.

No part of this publication may be reproduced copied or transmitted in any form or by any means stored in an information storage retrieval system without the publishers written permission

Although every effort is made to ensure the accuracy and reliability of material published, Margarets Publishing, can accept no responsibility for any veracity of claims made by the advertisers or contributors.

The views expressed in the publication are not necessarily the views of the publisher.

Hello & Welcome...

Hope you are all well and at the time of writing my intro experiencing some good sunny days but chilly breezes -so we have all been getting out in our gardens and enjoy this early summer weather. I would like to welcome all our new advertisers to this edition of L25 edition for May 2026. My best wishes go out to both my new advertisers and to my loyal advertisers who have been with me some since I started my magazines back in 1992.

We have had a great deal of things going on - keeping the magazine up to date were we felt it needed a bit of updating. Check out my refurbished website www.margaretpublishing.co.uk - its looks great and easy for you all to use.

Lots going on in the area to let you know - the big one is our Woolton Cinema, and the other great one is The Village Cat opening up in the old Coast building, I am sure with coffee cakes in the day and bar later things will go really well with owners Andy, Chris & Rich they certainly know what they are doing as its their 4th venue in Liverpool. Finally we have Woolton Open Gardens on Sunday 12th July - tickets are now on sale for this great event organised by WIB and refreshments provided by WOW WI its sure to be a great day. Please take a look at our new advertisers within this edition and support them as much as you can - they need your help to remain on the high street. I'll close now - take good care of yourselves - keeping safe and healthy and enjoy our early summer2026.

Regards, Margaret



Win **£20,000 CASH** when you replace your glass!

We're celebrating 20 years of excellence – and you could win **£20,000 in our Anniversary competition!** To enter, simply spend **£500 or more with us between now and the end of August 2026.**

For over 20 years, Cloudy2Clear, a trusted family-run business, has been the UK's leading domestic glass replacement specialists, serving as your One-Stop Shop for all your glazing requirements – and now we're marking this milestone with an exciting competition where one lucky customer will win £20,000! We take pride in generating our own leads, crafting tailored quotes, and manufacturing our own glass using only the highest-quality materials to ensure exceptional results. Unlike competitors, we never use subcontractors—our team consists entirely of skilled, in-house professionals, guaranteeing consistent quality and reliability. Every glass unit we fit comes with a 25-year guarantee, complemented by comprehensive after-sales care, providing you with lasting peace of mind.

Why opt for costly full window frame replacements that lead to unnecessary redecoration expenses? By replacing

only the failed glass unit, we save you money and minimise disruption – perfect for qualifying for our £20,000 prize draw while upgrading your home. Join over 344,000 satisfied customers who trust our ethical, affordable service. Failed double glazing can compromise your home's protection and energy efficiency, so check your windows today to avoid future costs.

Since 2005, Cloudy2Clear has been committed to saving customers money while supporting local communities. Manager Stan Stannard explains, "Our focus is on replacing just the glass, not the entire window, which reduces costs and upheaval. As a One-Stop Shop, we manage everything—from lead generation to crafting premium glass with a 25-year guarantee and dedicated after-sales support—making us the smart, cost-effective choice in any economy."

For a free quote (and your chance to enter the competition), call 0800 61 21 118 or visit www.cloudy2clear.co.uk today!

(Prize draw 28/8/2026 - T's&C's apply. Visit www.cloudy2clear.co.uk for more information)

“
Ask me about our fantastic Energy Saving Glass.
”



Have Your Windows Steamed Up?

Replace the pane, not the frame!

All glazing backed by our

**25
YEAR
GUARANTEE**

“I really liked the fact that they were a local community-run business”

Janet Beard



We are a
**Checkatrade
Member**



Get a **FREE Quote**

Your trusted local expert

Faulty locks, handles or hinges?

**cloudy2 CLEAR
WINDOWS**

Glass, it's better when it's clear!

Priority freephone
0800 61 21 118

www.cloudy2clear.co.uk

Glass, it's better when it's clear!



Woolton in Bloom



2001 ~ Woolton In Bloom ~ 2026

It is quite hard to believe that the volunteers have worked for twenty five years making our village a better place for everyone who lives, works or visits. Of course the volunteers have changed over the years but some of us have been here since the start and seen many changes. From the first year when we entered RHS Northwest in Bloom we have had success, winning Best Large Village. We were then nominated to enter RHS Britain in Bloom, again with great success. The RHS committee changed the category we could enter to Urban Community. I was very much against this because we are known as Woolton Village. The powers that be insisted we change because we are part of Liverpool Council Area.

Well we rose to the challenge and won Best Urban Community.

We are still, I think, the only entrant to win in two categories. We culminated our entry when we were chosen as one of the five best in Britain to enter Champion of Champions. We were runners up to Shrewsbury.

Since then we have not entered any competition simply because as a small group of volunteers it would be impossible for us to keep up the good work which involved so many hours. Our volunteers are dedicated but as the saying goes 'Time and tide wait for no man' and we cannot turn back the time. We still continue to do our best and hope you appreciate the effort that we all put in.

We have displayed some memories of our work over the twenty five years in the notice board by Lodes Pond.

We will be planting a Silver Anniversary Rose to celebrate.

Kerry Peacock, Horticulture Manager. Mobile: 07969881270

Email: kerry.peacock13@gmail.com

Please get in touch if you can help us... Contact: Kerry Peacock, Horticultural Director

Find us on Facebook & Instagram: [@woolton.in.bloom](https://www.instagram.com/woolton.in.bloom)



TIME TO RECLAIM YOUR LOFT SPACE



We are specialists in loft ladders and hatches for easy and safe access to your loft. We also provide boarding, lighting and insulation solutions. This 'Spring Clean' time we can help you turn your lost space into really useful loft space.



WHAT MAKES US DIFFERENT

- You don't have to wait around for us to arrive!
- Lifetime Guarantee
- You'll have added peace of mind knowing we are accredited by Which? Trusted Traders
- You could gain up to a third more space
- No mess, no fuss, just safe, easy access to your loft space.





WOOLTON PICTURE HOUSE 1927

WE DID IT!

All of the hard work and donations have paid off as we smashed the fundraising total!

*More than 2,500 of you gave to the campaign with a further 16,000 buying tickets,
popcorn and merchandise. Thank you to all of you!*

£532,884 RAISED!

The last few days has seen a big plot twist too!

Last week, a mystery donor stepped forward and has bought the building outright.

They have given Woolton Cinema CIC a 101-year lease at a peppercorn rent of £19.27 per year.

What does that mean?

Well, it means that Woolton Picture House will be a community led cinema until it's 200th birthday in 2127!

It also means the money that we have raised, £532,000, can now all be used to refurbish this beautiful building.

*We are currently drawing up plans but they will include a new roof with solar panels,
full disabled access, new toilets, a stage area at the front...*

We are going to need to raise some more to make it happen.

*Thanks to the long lease, we can apply for funding from various places like the National Lottery,
Arts Council England and the British Film Institute.*

*Everything will be done with a view to keeping the look and feel of the Picture House, we're actually going to reveal
some more of the original 1920s features that have been covered up over the years.*

*Over the summer we'll be holding some public consultation events to talk about plans and see what you want to
happen to this place. We'll email you about that when it happens.*

So, for now? Well, for now we're going to celebrate! We hope you will too.

*Thank you to everyone who has given their time, their skills and their money to this
campaign. It took a village to raise a Picture House - This village.*

Thank you all.

Who else wants an honest, reliable and **AFFORDABLE** police checked* cleaner?

- ✓ Regular Home Cleaning
- ✓ Vetted & Trusted Cleaners
- ✓ Quick & Easy

£20*
OFF your first
clean with this
leaflet



Typically
£18.50 Per Hour

TIME FOR YOU .CLEANING

Hi, I'm Alexandra, and I run Time For You Liverpool South, a local, trusted and family-owned business. We take pride in offering honest and reliable cleaners with years of experience; so you'll get a sparkling clean, every time.

Life's too short to spend it cleaning! Let us take the strain from you, so you can enjoy more of life's great moments!

Call Us Today: 0151 380 0696

Email: liverpool-south@uk.timeforyou.cleaning
Mobile or WhatsApp: 07707 783665

Scan the QR to book online at: www.timeforyou.cleaning/liverpoolsouth



Much Woolton & Hunts Cross

JOSIE MULLEN

Cllr Josie Mullen

Mob – 07746812627 / Email – JosieMullen@proton.me

I am available for home visits



SOPHIE BROWN

A Woolton resident since 2020 and lifelong Liverpool resident, Sophie Brown will be supporting me in the Much Woolton & Hunts Cross ward. Together, we will be dealing with casework and organising skips etc. We will also be developing initiatives, such as the Much Woolton & Hunts Cross Community Group and preparing for the distribution of thermal clothing this coming Autumn.



MUCH WOOLTON & HUNTS CROSS COMMUNITY GROUP

Together with Sophie and two residents from the ward we have formed a community group. It will be a grassroots, people powered group, bringing together the voices of Much Woolton and Hunts Cross and built on unity, pride and action.

PLEASE JOIN US BY CONTACTING ME on -
JosieMullen@proton.me

MARIE CURIE DEMO

On Saturday 21st March – I joined a demonstration outside the Marie Curie site on Speke Rd as the closure of the End-of-Life ward has distressed so many people. The Marie Curie End-of-Life ward had a wonderful reputation for looking after people in their last weeks/months of life, as has been evidenced by so many relatives of patients. While the 'Virtual Ward' model will suit those patients who wish to die at home, there are many terminally ill people who would prefer the medical and emotional support that the Marie Curie ward gave.



MAMMAMIA – ITALIAN AFTER-SCHOOL CLUB

MammaMia Liverpool is a UK-registered charity that promotes the Italian language and culture. I met Stefania Pisano and Gioia Palmieri who help run the charity and they have offered to organise free after-school Italian clubs for Liverpool Primary schools. I am going to offer the schools in Much Woolton & Hunts Cross the opportunity to take part, as Italian is a really fun language to learn.

Liberal Democrats

GUARDX ROOFING

Guardx Roofing Limited, 115 Whitney Road Liverpool L25 5LT

guardxroofingltd.co.uk

Telephone: 0151 471 8636 | Email: guardxroofing@icloud.com



**ROOFING REPAIRS
TILING & SLATING
FLAT ROOFING
EPDM RUBBER ROOFING
GRP ROOFING
FASCIAS & SOFFITS**



TRUSTED NEW ROOF REPLACEMENTS - OVER 25 YEARS OF EXPERIENCE!



CS TREE & GARDEN SERVICES

- Tree Surgery
- Stump Grinding
- Grounds Maintenance
- Turfing
- Garden Clearance
- Hedge Trimming

*All your garden maintenance requirements!
Get in touch for a free no obligation quote*



07799037669 or 0151 722 9322



cstreegardenservices@gmail.com



[cstreegardenservices](https://www.instagram.com/cstreegardenservices)





Dear Resident,

Last year, when it was thought that the Woolton Picture House would not reopen again following its closure, along came a lifeline in the form of Kevin Fearon and Gillian Miller who live locally and wanted to do all they could to save this much loved venue.

A Community Interest Company (CIC) was set up and the race was on to raise an initial £450,000 by May this year in order to purchase the building, followed by a second phase of fundraising to refurbish the cinema. Earlier this month there were celebrations when we learnt that a massive total of £532,884 was raised, which would have enabled the CIC to purchase the cinema. However, there was a twist to the fundraising campaign with local residents being informed that an anonymous donor had purchased the building outright meaning that the money raised throughout the year could now be used to help with the refurbishment of the building. The was fantastic news for the future of the picture house with a 100 year lease being agreed meaning that the picture would remain until at least 2127. Everyone who gave their time over the past twelve months to fundraise and who made donations and bought tickets for the movies deserve many congratulations for being part of this success.

However, it does not stop here. There will be a series of films being shown at the cinema throughout the year and it is important that we all continue to support the cinema when they are shown. There are also plans to consult with residents about what you would like to see happen with the cinema, which will help shape its future.

Last month I, along with members of the Woolton Society, met with developers who have recently purchased Knolle Park at the top of Beaconsfield Road to discuss their proposals for the site ahead of the submission of a planning application. Their proposals are to build eight detached dwellings on the site and to retain the listed building as a single residential property following full refurbishment. Following many years of this site being abandoned and subjected to arson attacks and vandalism, this is the best possible outcome for the site. Developers will carry out consultation on this as well as the usual consultation as part of the planning process.

For far too long many residents will have noticed the frequent illegal parking of vehicles on the pavement in front of the Yorkshire Building Society causing obstruction to pedestrians. I have, on numerous occasions, asked the council to take action to stop this from happening by installing additional bollards at this location, but this has failed to happen. I have therefore contributed some funding to Woolton in Bloom to enable them to purchase additional planters for the Village and I have helped to move existing planters to go in front of the Yorkshire Building Society. This will now hopefully stop the illegal parking from continuing. I have also once again asked parking services to carry out more frequent enforcement elsewhere in the Village to tackle parking problems.

Now that the weather is improving, over the next couple of weeks I will be in the Village repairing and repainting the benches, and I would ask residents to look out for wet paint signs when this is done.

Woolton Village continues to host a Farmers Market on the second Saturday of the month with the next two markets taking place on Saturday 13th June 2026 and Saturday 11th July 2026. Please come along and support our market.

I continue to hold a weekly Advice Surgery (via Zoom) every Tuesday from 7.00 p.m. (by appointment only). Please get in touch if you would like to arrange to speak with me and I will send a link, or if you prefer to meet in person at Woolton Youth Centre I will make arrangements. I also hold my popular advice surgery at the Farmers Market on the second Saturday of the month where you can come along and raise any issues with me, or you can get in touch via the e-mail below.

Best wishes

Malcolm Kelly

Councillor Malcolm Kelly (Woolton Village Ward)
malcolm.kelly@liverpool.gov.uk





Specialist installers of Energy A-Rated
windows & doors conservatories,
orangeries, porches, patio & bi fold doors
...to make your home beautiful, warm, safe & secure



Hartley Glazing

with over
30 years
Experience

THAT'S WHY PEOPLE
RECOMMEND US!

Call for a **FREE** estimate:

0151 721 3026 / 07946 599403

www.hartleyglazing.co.uk

HEALTH SERVICES FOR WOOLTON AREA**CHIROPODISTS****Mr Atheron**, Flat 13, 27 Woodvale Road 0151 280 0085**Mr Brookes**, Dunbabin Road, Childwall 0151 722 3070**Woolton Ultimate Podiatry**, Quarry St. 0151 428 8411**DENTISTS****Al Hussian**, Church Road, Woolton 0151 428 3173**Belle Vale Dental**, Hedgefield Road 0151 498 4411**Duthie & Wyatt**, Woolton Road 0151 722 2642**Gateacre Dental Surgery**, Halewood Rd 0151 428 4034**Gental Dental Care**, Childwall Priory Rd 0151 722 3000**Hillcroft Dental Practice** 75 Church Rd 0151 428 3173**Mr & Mrs. Syal**, Manor Road, Woolton 0151 428 1474**Hunts Cross Dental Centre**, Macketts Ln 0151 486 2697**Integrated Dental**, Halewood Road 0151 428 4034**Peers Backstrom**, Gateacre Park Drive 0151 428 6714**Puredental**, 43 Allerton Road, L18 2DA 0151 722 0884**Woolton Dental Surgery**, Woolton Village 0151 428 6309**DOCTORS****Camberley Drive** (Aston Healthcare)
11b Camberley Drive 0151 486 1178**Gateacre Medical Centre Ltd**
49 Belle Vale Rd 0151 487 8660**Gateacre Brow Surgery**
1 Gateacre Brow Liverpool 0151 295 9595**Hunts Cross Surgery**
256 Hunts Cross Avenue Liverpool 0151 295 9595**The Village Medical Centre**
20 Quarry Street Liverpool 0151 428 4282**Valley Medical Centre**
75 Hartsbourne Avenue Liverpool 0151 722 2744**Woolton House Medical Centre**
4 Woolton Street Liverpool 0151 295 8686**OPTICIANS****Woolton Opticians**, 34 Woolton St. 0151 428 4040**PHYSIOTHERAPISTS****Rocky Lane Medical Centre**,
80 Rocky Lane, Liverpool L16 1JD 0151 722 3366**Physio @ Fitness For All**
17A Woolton Street, Woolton 0151 421 0606**Village Physiotherapy & Sports Injury Clinic**,
13 Woolton Street 0151 559 0755**LOCAL AMENITIES FOR WOOLTON AREA****CHURCHES****St James' Methodist / URC Church**,
Church Road South 0151 364 0134**St Hilda's Church**
Kingsmead Drive L25 ONG 0151 486 4060**St Marys Church**
Church Road, Woolton 0151 428 2256**St. Peters**,
Church Road, Woolton 0151 428 6810**HOSPITALS****Alder Hey**, Eaton Road 0151 228 4810**Broadgreen**, Thomas Lane 0151 282 6000**Liverpool Women's** 0151 708 9988**Royal** 0151 706 2000**Whiston** 0151 426 1600**MEDICAL****Woolton House Medical Centre**, Woolton St. L25 5JA
Every Friday 2.30pm-3.45pm**Gateacre Brow Surgery 1 Gateacre Brow L25 3PA**
Every Friday 12noon-12.45pm**One to One Appointments only**
Freephone 0800 195 2131**POLICE****Emergencies Only 999 or Non Emergencies 101**
General calls: 0151 709 6010**FIRE & RESCUE SERVICE****Emergencies Only 999 General calls: 0151 296 4000****AMBULANCE SERVICE****Emergencies Only 999 General calls: 0151 260 5220****VETERINARY****Woolton Veterinary Centre**
Quarry Street, Woolton 0151 428 8600**TRAVEL****Liverpool Airport** 0870 750 8484**Manchester Airport** 0161 489 3000**National Rail Enquiries** 0845 748 4950**Traveline (Public Transport Info)** 0870 608 2608**IF YOU ARE AWARE OF ANY ERRORS OR OMISSIONS
IN THIS SECTION, PLEASE LET US KNOW
AND WE WILL CORRECT THE INFORMATION.**

B. JENKINS & SONS

Family Undertakers - Established 1880



141 Years of Dedicated and Caring Service
from our Family to Yours

The oldest family funeral service in Liverpool
with over 141 years of dedicated personal service.

We tailor our services to suit each
individual family and their needs.

A true family concern...

Mr Gary Jenkins, Miss Sheila Jenkins, Mr Andrew Jenkins,
Mr Tony Jenkins, Miss Chloe Jenkins, Miss Emily Jenkins

24 HOUR SERVICE

Office & Private Chapels of Rest

4 Church Road North, Wavertree, Liverpool, L15 6TF (by Picton Clock)

For help and advice on funeral arrangements

Please call 0151 733 7201

enquiries@bjenkinsandsons.co.uk www.bjenkinsandsons.co.uk

Golden Charter
Funeral Plans



Pre-Paid Funerals
Available

Councillor Kimberley Berry

SPRINGWOOD WARD

 Springwood Councillor - Kimberley Berry



Dear Residents,

With spring now in full swing and the lighter evenings finally here, it's a great time to enjoy the green spaces that make Springwood ward such a special place to live. I wanted to share some of the progress I've been delivering locally, along with something to look forward to later this month.

Many of you will have seen the ongoing improvements at the **Pony Fields**, and it's been fantastic to see this space really come to life. This open meadow links through to Simpson Ground, Eric Hardy Nature Reserve and Clarke Gardens, creating an important natural corridor right in the heart of the ward. I've worked with the Council's Parks team to secure new fencing and improved access points, making the area safer, more accessible and more welcoming.

I've also been focused on enhancing this lovely, natural space. 20 new trees have recently been planted on the site, including wild cherry, hazel and English oak, which will mature over the years ahead. In addition to this, I've been out sowing high-growing wildflowers like cosmos and zinnia along the Woolton Road border — so keep an eye out as they begin to bloom. It's a lovely natural space where you can regularly spot wildlife, including birds of prey such as buzzards.



I was incredibly proud to accompany members of the School Council from **Springwood Heath Primary School** on their visit to the Lord Mayor of Liverpool at the Town Hall. They represented their school and our community brilliantly — showing confidence, curiosity and excellent manners throughout. They asked thoughtful questions and made the most of the opportunity to learn more about the role of the Lord Mayor, while sharing their own ideas about how young people can make a positive difference locally.

Looking ahead, I'm delighted to confirm that the **Allerton Hall Farmer's Market** will return on **Saturday 30 May**, (in the usual location outside Pub in the Park, between 11am and 4pm). I've worked closely with the Council's Markets team to bring it back, building on the success of previous events. This will be the 12th time I've arranged for the market to return, with a wide range of stalls offering fresh produce, baked goods and artisan products in the beautiful surroundings of Allerton Hall.



If you're a **Springwood ward** resident and would like to chat about any of this, or any other matters that may be on your mind please, do not hesitate to contact me via my details below - your feedback can help shape my next steps and what happens down your road.

Best wishes,

Kimberley

Councillor Kimberley Berry
Springwood ward

P.S. Don't forget - You can follow me on Facebook. I'm often publicising useful information and community events, along with some of the work that I do here in Springwood.

**LIVERPOOL
LABOUR**

Tel: **07713 522 486** Email: **kimberley.berry@liverpool.gov.uk**



Golden Charter
Funeral Plans



RICHARD & SHANNON JENKINS

INDEPENDENT FAMILY FUNERAL DIRECTORS

*RSJ Family Funeral Directors are your local,
trusted, independent funeral directors.*

*We believe in being at the heart of the community, providing a first class
24 hour service and building strong everlasting relations
with you and your family at this very difficult time.*

“WE ARE EVERYTHING BUT OVER PRICED”
Pre Paid Funerals available

PERSONAL ATTENTION OF

Mr. Richard Jenkins • Ms. Shannon Jenkins • Mr. Richard Jenkins Jnr
Mr. Ryan Jenkins • Mr. Barry Jenkins



Richard & Shannon Jenkins Funeral Directors

Formerly of B. Jenkins and Sons

3 Allerton Road, Liverpool, L18 1LG

Customer parking at rear of building in Auckland Road

Call: 0151 318 4660 :: Email: shannon@rsjfunerals.co.uk

WE HAVE NO CONNECTION WITH ANY OTHER COMPANIES OF SIMILAR NAME

EDUCATION IN & AROUND WOOLTON

NURSERY SCHOOLS

Belle Vale Day Nursery	0151 498 4008
Blue Bells Nurseries	0151 487 5298
Cottage Day Nursery	0151 283 3335
Kelton Nursery, Park Avenue	0151 724 5802
Much Woolton Old School	0151 428 1101
Bluebells Nursery @ Norman Pannell School	07762 775 803
Rockbourne Day Nursery	0151 428 0768
St James Pre School	0151 428 7525
Little Misses & Misterys	0151 428 4646
Woolton Village Day Nursery	0151 428 7888

PRIMARY SCHOOLS

Bishop Martin, Church Road	0151 428 6295
Gilmour Infants, South Bank Road	0151 427 6306
Gilmour Junior's Whitehedge Road	0151 427 4082
Holy Family Primary School, Arncliffe Road	0151 282 8971
Much Woolton, Watergate Lane	0151 428 6114
Norman Pannell	0776 277 5803
Our Lady of the Assumption Catholic Primary School, Hedgefield Rd, L25 2RW	0151 487 9301
Springwood Heath CP, Danefield Road	0151 427 7759
Woolton CP School, Out Lane	0151 428 3235

SECONDARY SCHOOLS

Bellerive FCJ Catholic College, Windermere Terrace, Sefton Park, L8 3SB	0151 727 2064
Bluecoat, Church Road	0151 733 1407
Calderstones, Harthill Road	0151 724 2087
Gateacre School, Hedgefield Road, Liverpool L25 2RW	0151 235 1400
Enterprise South Liverpool Academy	0151 294 3150
St. Francis Xaviers (Boys), Beaconsfield Rd	0151 288 1000
St. Julies (Girls), Speke Road	0151 428 6421
Liverpool College, Queens Drive	0151 724 4000

SIXTH FORM SCHOOLS

Gateacre School, Hedgefield Road, Liverpool L25 2RW	0151 235 1400
Bluecoat, Church Road	0151 733 1407
Calderstones, Harthill Road	0151 724 2087
Enterprise South Liverpool Academy	0151 294 3150
St. Julies, Speke Road	0151 428 6421
St. Francis Xaviers, Beaconsfield Road	0151 288 1000

INDEPENDENT SCHOOLS

Belvedere Preparatory School, 23 Belvidere Road, L8 3TF	0151 471 1137
Carleton House Prep, 145 Menlove Avenue Liverpool L18 3EE	0151 722 0756
Runnymede St. Edwards School, North Dr, Sandfield Park	0151 281 2300

SPECIAL SCHOOLS

Hope School, Hartsbourne Avenue Liverpool	0151 235 1410
Lakeside School, Naylors Road	0151 487 7211
Palmerston School, Minehead Road, Aigburth L17 6AU	0151 428 2128
Royal School for the Blind, Church Road North	0151 733 1012
Abbott's Lea School, Beaconsfield Road	0151 428 1161

ONE TO ONE TUTORING

First Class Liverpool, Mossley Hill Church Hall, L18 8DB	07305310219
Woolton Tutors Dr John Ankers www.wooltontutors.co.uk	0151 428 2958 / 07974157792
Woolton Tuition, Salisbury Lodge, 22b, Woolton Street, L25 5JA www.wooltontuition.co.uk	0151 345 6987



Programmes cost £5 per person available from WIB Farmers Market and Browns Newsagent, The Hub at St Peters Church, on the day at Bishop's Lodge or at any of the gardens.

Visit www.wooltoninbloom.wixsite.com Facebook or Instagram

Woolton in Bloom Open Gardens

approx 9 gardens open Woolton, Liverpool

Sunday 12th July 2026 12.00pm to 5.00pm

This is the 25th anniversary of Woolton in Bloom and we will celebrate it with spectacular gardens for you to visit as well as the Bishops' Lodge famous gardens.

Woolton in Bloom has been transforming the village with beautiful floral displays since the beginning of the century. All our work is carried out by our hard-working volunteers and funded by donations and fundraising activities. We were Gold Medal winners in the RHS Champion of Champions 2014.

There will be a number of stalls for you to browse, including crafts by local artists. We are also hoping to keep you entertained with some live music and a Tia Chi demonstration.

Refreshments will be available at the Bishops' Lodge.

Proceeds: All proceeds to go to planting and maintenance of the village floral displays, and Woolton WI.

Cost: £5.00 per adult, accompanied children free,

How to get tickets / programmes: Buy tickets on the day from any participating garden or from the Woolton in Bloom stall in the Farmers Market (2nd Saturday of each month), Browns' Newsagent, Woolton, or via the website.

Contact the organisers: Email: Vivhicks1425@gmail.com

Web: <https://wooltoninbloom.wixsite.com/wooltoninbloom>

Toilet Facilities: Toilets are available at this event.

Directions / Parking: Woolton is easily accessed by car and public transport. By car: signposted off the A5058

Queens Drive. By bus: 75,78,79 from the city centre; 81 from Bootle/Speke; 89 from St Helens. By train: the nearest stations are Liverpool South Parkway, Hunts Cross.

Location: Merseyside. Use Sat Nav postcode: L25 6JZ (please verify before travelling)

Please tell the organisers that you found them on the Open Gardens National Directory.

and ... give them a gentle nudge to make a small donation to our 2026 running costs.

the create

WORKSHOP

A fully equipped professional studio with sewing machines, cutting tables, pressing equipment and specialist tools for all our students to use.

We offer a variety of classes & workshops for children & adults of all levels of ability.

The Create Workshop holds daily dress-making and pattern cutting sessions and courses. You can take part in a 'Sewing for Beginners' session to build your confidence with machinery and equipment or just dive straight into a garment making 6 week course - all levels of ability are welcome.

All you need is fabric and a pattern and we will teach you how to make beautiful, quality clothes. Alternatively and re-fashion your own wardrobe by vamping up your old garments.

We guarantee we will unleash creative skills you never knew you had!!

Adults:

There are pattern cutting and garment making courses available daytimes and evenings; catering for all levels of ability. Sewing for beginners sessions to build confidence and basic skills. Monthly crochet sessions provide the perfect opportunity to improve hand-eye coordination. We also host unique and seasonal classes including cupcake decorating, felting and flower arranging.

Children:

Children can join garment making course running every Friday eve and Saturday. They learn how to use patterns, cut out and sew, producing amazing, high quality garments.

Parties:

Fun and memorable children's/hen/baby shower parties are hosted in a beautiful environment. Choose from a selection of workshops and make use of the fabulous cafe.

Brownies, Guides & other social groups

Our local Brownies and Guides leaders always enjoy bringing in children for a fun packed session, taking home a quality product. We will be hosting Christmas stocking making, wreath making, cake decorating and lots of other festive activities!

Visit our website:

www.thecreateworkshop.com

Email: info@thecreateworkshop.com



Follow us on Social Media: Instagram/Facebook



HALTON & LIVERPOOL'S

TRUSTED CARE PROVIDER. HIGH QUALITY CARE FOR ADULTS & FAMILIES.



0151 486 8494
call for more information

At Support at Home, we are a local, family-run business dedicated to providing high-quality, personalised care services in Liverpool, Halton and surrounding areas. Our compassionate Support Workers assist with personal hygiene, medication, meal preparation and companionship, ensuring you or your loved ones can live independently with dignity and respect. We take pride in our professional and friendly approach, tailoring our services to meet the unique needs of each individual. Experience the difference with Support at Home – where care feels like family.

OUR CARE SERVICES



Personal Care & Support



Daily or Weekly Visits



Medication Administration



Flexible, Personalised Care Plans



Meals, Domestic & Companionship



Live-In Care Available

CONTACT US



alloffice@supportathome.co.uk



[@Support_at_Home](https://twitter.com/Support_at_Home)



www.supportathome.co.uk



[@supportathome.co.uk](https://www.facebook.com/supportathome.co.uk)



#CareBeginsWithKindness

Established since 1934 - Delivering Newspapers for 90 years!

Browns Newsagent



NEWSPAPERS & MAGAZINES DELIVERED 1 TO 7 DAYS

- Delivering between 5.30am & 8am
 - Delivery charge from just 30p per day
 - Newspaper subscription vouchers accepted
 - 1st 6 weeks free delivery – just pay for Newspapers
 - Account Monthly statement sent out in your paper.
- Cash | Cheque | Debit/credit cards accepted
pay in shop, over the phone or we can collect in person

OPENING HOURS:

Mon-Fri: 5am – 12.10pm (Closed 12.10 to 3.10) Re-Open 3.10pm – 4.30pm

During School Holidays 5am – 12 Noon

Saturday – Sunday: 5am – 11am

Please CALL MIKE on 0151 428 2408 to arrange your paper delivery

BROWN'S NEWSAGENT 50 Woolton Street Woolton L25 7TQ Telephone: 0151 428 2408

**"STORY OF
WOOLTON"
BOOKS REDUCED
FROM £15
TO JUST £5**

***"Include Me"... a local group,
run by local people and based***

***in Woolton, we are here for everyone who wants to be a part of
a lovely group of people who meet for coffee, chat and various
activities weekly including an occasional day out.***

We started our group in September 2013 tackling Isolation and loneliness in our local community. During that time we have welcomed so many people of all ages and abilities who have become an integral part of our group.

We know that we are making a difference in people's lives as we have seen new friendships created. We have now moved to Strawberry Field, a lovely friendly and welcoming location in Woolton.

We would love to meet you or anyone you know who may be interested in our group.

So don't be shy, come along and be part of our "Include Me" group.

Our motto is "Working together, we can achieve so much more"

Include  Me

Every Wednesday 10.00am to 12.0pm at Strawberry Field, Beaconsfield Road, Woolton, L25 6EJ

For further Information, contact Janet on 07894 585689 Email: janb33@hotmail.com

MERSEYSIDE TREE SERVICE

FOR A FREE QUOTE CONTACT NEIL ON
0151 226 6037 or 07766715232

www.merseysidetreeservice.org

- TREE SURGERY • FELLING • HEDGE TRIMMING •
- PRUNING • PLANTING • TREE STUMP REMOVAL •

Expert
LAUNDRY & DRY CLEANING

MAGEE'S DRY CLEANERS
www.mageedrycleaners.co.uk

Mon to Thurs 09:00-17:00
Friday 09:00-16:00
Saturday 10:00 - 16:00
Sunday Closed

- Dry Cleaning
- Laundry
- Ironing
- Household Items (Duvets, Curtains)
- Wedding & Prom Dresses
- Collection & Drop Off Service
- 10% OFF For Blue Light Card Holders & Over 60's
- Next Day Collection
- Service Dress

10% OFF
FOR BLUE LIGHT CARD HOLDERS & OVER 60'S

OPENING HOURS
Mon to Thurs 09:00 - 17:00
Friday 09:00 - 16:00
Saturday 09:00 - 16:00
Sunday Closed

2 Woodend Avenue, L25 OPA ☎ **0151 394 2680**

www.mageedrycleaners.co.uk



NJ Domestic Ltd
Kitchen Appliance Repairs
White Goods Appliance Service & Repairs



Appliance Repairs Tumble Dryer Repairs
Washing Machine Repairs Dishwasher Repairs
Electric Oven / Hob Repairs

07731 446 115
www.njdomesticsltd.co.uk



THE Woolton Society



The Woolton Society has had several excellent and very well attended talks to start the year, now with the change to British Summer Time, all starting at 7.30pm on Wednesdays in St Mary's hall off Church Road L25 5JF.

*There was a change to the advertised programme in April, with maritime historian Steve Ragnall speaking on the Confederate steam ship *The Alabama*. The talk on *The Search for the Holy Grail* from John Coventry will now take place on Wednesday 20th May at 7.30pm. The talk on *Public Health in Liverpool* has been postponed to a later date.*

*June sees our eighth annual Quiz Night, with the reigning champions *Chips Ahoy!* defending their title. This will be on Wednesday 17th June. All are invited to make up a table of four, with participants allowed to bring their own refreshments. There will be prizes!*

A tour of Shakespeare North in Prescot is planned for Saturday 4th July. Refreshments are included, with a subsidised price for Woolton Society members of £10. Non-members would pay the full price of £15.

After a Summer break in August the talks resume in September, with all details in the society's newsletter, or on our website - follow us on Instagram

www.wooltonociety.org.uk

or find us on Instagram **@thewooltonociety**

Jean Davies, Woolton Society chairman

If you are interested in your local environment why not join the Woolton Society.

By joining you can:

- Increase the Society's influence •
- Keep in touch with the things in your area which you think require attention •
- Attend talks organised by the Society • Receive newsletters •

Membership of the Society does not require any commitment of time

...although of course we always welcome help!

Adult membership - single £6.00, joint £9.00

Pensioner or student membership - single £4.00, joint £6.00

Membership forms can be downloaded off the website. Ideally to keep costs down we would prefer payment by Standing Order, and if possible to fill in the GiftAid form which enables us to claim back tax on your subscription. The address to send the form to is shown on the form - for security reasons we cannot take the form electronically.

Alternatively, you can join at one of the talks.



LIVERPOOL TYRES

**MERSEYSIDE'S BIGGEST
PART WORN TYRE CENTRE**

- **Run Flat Tyre Specialist** •
- **New and Nearly New Tyres** •
- **Wheel Alignment Specialist** •
- **All Brands and Sizes Available** •
- **Thousands of Tyres In Stock** •

**Call Now For A FREE Quote
0151 734 4420 or 0791 210 5294**



**www.liverpool-tyres.co.uk
Spekeland Road, (off Tunnel Road)
Wavertree, L7 6HY**



WHAT'S ON IN THE HUB@ST.PETER'S?

- June to August 2026 -

The Simon-Peter Centre, Church Road, Woolton L25 5JF



We are open 9-1pm Monday to Friday for anyone to drop-in for a free cuppa, snack, chat, enquiry, signposting or prayer.

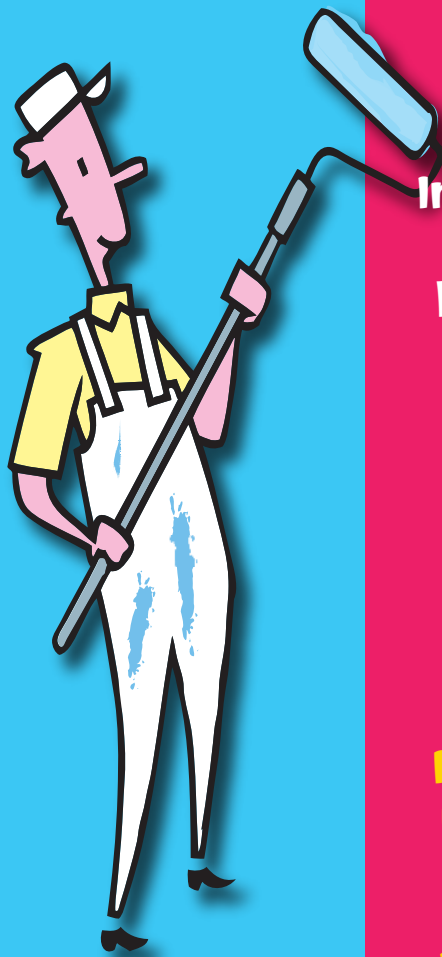
Mon	<p><u>Games Club</u> 10.30-12noon A weekly drop-in, with a free cuppa and biscuits/cake. All welcome.</p> <p><u>Tea and Tales</u> 10.30-12noon A weekly shared reading group, with refreshments.</p>	<p><u>Craft Group</u> 10-12 noon £4pp for resources Meets fortnightly, <i>excluding bank holidays</i>; 8th & 22nd June, 6th July</p> <p><u>Pins & Needles (Sewing)</u> 10-12 noon *Group currently full* Alternate dates with the Craft group above on 1st, 15th & 29th June, 13th July</p>	<p><u>Minnows</u> 1.30-3pm in the Church Hall Meets weekly <i>during school term time only</i> with toys, activities & refreshments for pre-school children & babies with their parents & carers. £2 per family.</p>
Tue	<p><u>Family Space</u> 10am-12noon A stay and play holiday session for all ages of children with their parents/carers. Includes craft, art, indoor and outdoor games, toys, books, drinks, snacks and fruit. £2 per family. Dates; 26th May, 21st & 28th July, 4th, 11th & 18th August</p>	<p><u>Lyfe</u> 9-10.15am Friendship, prayer & bible discussion, <i>during school term time only</i>, for parents with refreshments.</p> <p><u>Art as Worship</u> Tues 9th Jun & 14th July 11.30-1pm Explore scripture through art, all materials provided. Book your place: https://sokastudio.co.uk/artasworship</p>	<p><u>Knit & Natter</u> 10.30am-12.30pm Meets weekly, with home-made cake and hot drinks. Experienced knitters and beginners welcome alike. We regularly knit for a range of charities and good causes.</p>
Wed	<p><u>Sing-a-long</u> Monthly on the 1st Wednesday 10.30-12noon Includes hot drinks & cake.</p> <p><u>Bingo</u> Monthly on the 2nd Wednesday 10.30-12noon Lots of prizes to be won!</p>	<p><u>Quiz Morning</u> Monthly on the 3rd Wednesday 10.30-12noon with refreshments</p> <p><u>Musical Jam</u> Monthly on the 4th Wednesday 10.30am-12.30pm A drop-in session for musicians.</p>	<p><u>Police Surgery</u> 3-weekly 10-11am Speak to Grace, one of our local PCSOs about any concerns. Confirmed forthcoming date: 17th Jun, phone us for more.</p>
Thu	<p><u>Tea, Coffee, biscuits & cake</u> 12noon - 12.45pm Weekly/fortnightly in the Hub, whenever there's no lunch.</p>	<p><u>Lunch 12-1pm</u> All welcome for a light lunch and cake for only £3pp on the following dates: 4th & 18th June, 2nd July only. Please phone to book ahead. <i>This lunch is free if you need it to be, please say when you book, thank you.</i></p>	<p><u>Minnows</u> 1.30-3pm In the Church Hall Meets weekly <i>during school term time only</i> with toys, activities & refreshments for pre-school children & babies with their parents & carers. £2 per family.</p>
Fri	<p><u>Table Tennis</u> 9.30-11.30am Meets weekly with refreshments, all welcome.</p>	<p><u>Hubbub</u> 11-12.30pm A weekly discussion group about the Christian faith, including refreshments.</p>	

The Hub will be closed on bank holidays.

For enquiries, please call 0151 428 6810 fb: @stpeterswoolton email: office@stpeters-woolton.org.uk insta: stpeterswoolton



**"Recommended
Tradesmen"
On Line!**



**Free Quotations &
Insurance Estimates**

▪
**Specialists in all
types of wallcovering**

▪
Interior & Exterior Work

▪
**Friendly, knowledgable
advice, over 30 Years
Trade Experience**

▪
**NO JOB TOO SMALL!
eg: Gutters cleaned
and painted from £45!**

▪
**Call Now for a Free
No Obligation Estimate:
DAVE - 07747 355044
0151 291 5345
JOHN - 07793 244789**

The **LIVERPOOL DECORATING** *Co.*
Domestic and Commercial Painters & Decorators
...your LOCAL tradesman!



kris.brown@liverpool.gov.uk

  @kristoforbrown

Monthly Litterpicks



Working with volunteers from the Friends of Gateacre, we've organised regular litterpicks in the area. They take place every first Saturday at 11am on the village green. Equipment provided. Come and join us! Thank you to the many volunteers who've joined us so far.

"It's been 84 years"



"It's been 84 years!" says Rose at the end of the 1997 film, Titanic. It almost feels that long in getting the bollards on Grange Lane. But they're finally here! They're looking good and will hopefully help with managing rogue parking in the village.

Street and traffic lights

Thanks to everyone that signed up to my petition on the Gateacre Brow street lights. They're now scheduled to be fixed between 5th-22nd May. Similarly, an investigation is ongoing by the council into the disturbances at the traffic lights further down.

New school governor

I'm pleased to announce that I'm joining Woolton Primary as a local authority governor. I've worked closely with the school in the past on a number of issues and with many of my constituents going to the school, I look forward to strengthening the relationship going forward.

Rainwater saved

Phase 1 of my partnership with United Utilities to stop the floods at the bottom of South Station Road is nearly complete. Over 40 people signed up to the waterbutt scheme - saving up to 10,000 litres of water a month. This will help dramatically reduce standing water in the area. The next phase will be working with partners in making structural changes to the land and underneath the area. The huge sign-up to the waterbutt scheme shows confidence in the actions needed to get this 30+ year issue fixed. To those that missed out - or outside the designated area. I'll hopefully have some good news on this soon.

ADVICE SURGERIES: Every 2nd Saturday @Woolton Farmers Market or by Appointment only @Woolton Youth Centre (Tuesday evenings - Email to book)

a.n

PLUMBING & HEATING



**ALL ASPECTS OF PLUMBING
CENTRAL HEATING MAINTENANCE
BOILER SERVICING & REPAIRS**

Telephone: 0151 525 2465
call for a no obligation quote

Email: anplumbing@virginmedia.com

PURE

THERAPIES & AESTHETICS

Looking for skin care treatments?

- Microneedling
- 3D Lipo Ultimate Pro
- Dermaplaning
- Trilogy Ice Laser
- Beauty treatments
- Semi-Permanent Makeup
- Hydrofacial
- Semi-Permanent Makeup
- Aesthetic treatments

HEAD SPA OFFER
Includes a bespoke facial, hot oil scalp massage and conditioning treatment
Standard 60 mins £59
Deluxe 75 mins £79

Pure Therapies & Aesthetics
10 Childwall Abbey Road,
Liverpool L16 0JN
Telephone: 0151 722 3456
info@puretherapiesandaesthetics.co.uk
Socials...  
puretherapiesandaesthetics.co.uk




Woolton Community Life

Registered Charity Number 1159642

Volunteer Befrienders wanted in Woolton

CAN YOU?
Spare just **1** hour to
Visit someone in Woolton
who is Lonely or Isolated

WE NEED YOUR HELP

Volunteer Befrienders needed in Woolton, Gateacre and Hunts Cross Areas.
Call us for a very informal chat: 07709418533
Visit our web page for more info:

www.wooltoncommunitylife.co.uk



RESPITE CARE AT WOOLTON GRANGE





COME AND ENJOY A STAY WITH US

Woolton Grange is dedicated to the care and support of residents who require 24 hour Care & Support. The Home offers an inclusive and varied Activities & Wellness programme for all to enjoy. Our caring team will be on hand around the clock to ensure the highest standard of comfort and care.

SHORT-TERM STAYS :

- ✓ Short Stay Fee – £1200 per week
- ✓ Perfect Introduction to Care Setting
- ✓ Person-centred Award Winning Care



 High Street, Woolton
Liverpool, L25 7TE
0151 428 9861

 **VISIT OUR WEBSITE**
www.wecaregroup.co.uk

RICHIE THE RANGER Guided Walks JUNE 2026

TUESDAY 2ND JUNE 1.00PM

SUMMER AT DIBBINSDALE & BROTHERTON NATURE RESERVE

Don't Miss this opportunity to enjoy the delights of this beautiful Nature Reserve in its full summer glory. Experience the flora and fauna, the beautiful wildflowers, the amazing reed beds and the stunning sandstone features. We also visit the ancient St Patrick's Well. Meet at the car Park. At Brotherton Park Lodge, 200 Spital Road, CH62 2AN, Wirral £2.50 per person

THURSDAY 4TH JUNE 1.00PM

OLDE WESTON VILLAGE RAMBLE

Put on your walking shoes for this delightful ramble that discover the olde village of Weston. Historic Churches, old farms, historic houses and magnificent views. We also ramble through the scenic delights of Runcorn Hill with its rambling pastures and beautiful Wildflowers. Meet St John the Evangelist Church Heath Rd, Weston Runcorn WA7 4LY **Please note: recommended for the enthusiastic walker. Good footwear or sturdy trainers** £2.50 per person

SUNDAY 7TH JUNE 1.00PM

DISCOVER PICKERINGS PASTURE

A lovely gentle walk that explores the history. The delights, the wild flowers, the green pastures, and the scenic views of Pickerings Pasture. (Easy) Meet in the Car Park, Mersey View Road Widnes, Cheshire WA8 8LP £2.50 per person

WEDNESDAY 17TH JUNE 1.00PM

GREAT BUDWORTH, THE PRETTIEST VILLAGE IN CHESHIRE

An extra special walk this month as we venture into the Cheshire countryside to explore the "Prettiest Village in Cheshire" Step back in time to a gentler age as we discover the amazing houses, the ancient church and more. **Bookings only. Limited to TEN spaces** £2.50 per person

SUNDAY 21ST JUNE 1.00PM

TREASURES OF A MOSSY HILL

Put on your walking shoes as we explore the fascinating area of Mossley Hill. We discover the beautiful Church, the old Cow Sheds, magnificent villas and Mansions and we learn of the influential characters associated with this lovely area. (Fair amount of walking and some steps) Meet at the main gates at Sudley Estate. £2.50 per person

WEDNESDAY 24TH JUNE 1.00PM

DISCOVER EVERTON PARK

Beautiful views, sloping pastures, historic churches and a Fascinating history, all can be discovered on this two-hour Tour of this intriguing and historic area. (Steps, slopes And fair amount of walking) meet outside st george's Church, hayworth street, everton £2.50 Per person

SATURDAY 27TH JUNE 1.00PM

HISTORY OF CAMP HILL AND WOOLTON WOODS

Fascinating walk that discovers the history and features of these two former Gentlemens estates. Discover their amazing past with tales of the former owners. We also explore the beautiful features including the magnificent walled garden. Meet at the Village cross, junction of High Street and Woolton Street £2.50 per person

THURSDAY 26TH JUNE 1.00 PM

HISTORY OF NEW BRIGHTON

Join us for this walks that looks back at happy memories of good old New Brighton, The walk discovers the history, origins and features of this lovely resort, **BOOKING BY EMAIL ONLY. LIMITED TO TEN PLACES.** email: richietheranger@gmail.com £2.50 per person

SUNDAY 29TH JUNE 1.00PM

THE SEVEN STREETS OF LIVERPOOL

By popular demand, another opportunity to take a fascinating step back in time as we trace the original seven streets of Olde Liverpool Town. Lots of amazing architecture, atmospheric nooks and crannies and unexplored area of our wonderful city. £2.50 per person **BOOKINGS ONLY. LIMITED TO TEN PLACES** email richietheranger@gmail.com



Please Note:

All walks are pre-book only £2.50 per person
(unless otherwise stated)

CALL OR EMAIL TO BOOK

Email: richietheranger@gmail.com

Mobile: 07850 239 411



Care for a life you love

with Right at Home South Liverpool & Halton

There's no place quite like home — where everything feels familiar and life moves at your own pace. With the right help, you can keep enjoying that sense of comfort and belonging.

We offer visiting care, respite care and live-in support, with every plan shaped around what matters most to you. Fully regulated by the Care Quality Commission, our Carers offer tailored support to help you live well at home.



Visit Right at Home online



Visit us online or call us:
0151 665 0365
rightathome.co.uk/southliverpool



**Better
hearing
starts
here**



Specsavers

Let's make a change for the better

If you've noticed that a friend, family member, partner or work colleague isn't hearing as well as they used to, then Specsavers could help. Or maybe you've noticed that your hearing isn't what it used to be - perhaps you recognise some of the following:

- Telephone conversations are tricky
- The TV or radio volume is uncomfortably loud for other people
- Struggling to follow conversations at the dinner table
- Feeling left out in noisy social situations

But don't worry, everyone's hearing changes over time - one simple visit could help prevent years of frustration. We'll check your hearing to see what has changed and suggest the best solution for you - and you can trust that we will only recommend what you need.

Book a free hearing check at
[specsavers.co.uk/hearing](https://www.specsavers.co.uk/hearing) or call 0151 734 7555

£50 off selected Specsavers Advance hearing devices

If you buy hearing devices from our Specsavers Advance Premium, Super and Elite range we'll give you £50 off.

Allerton Road
160 Allerton Road Tel 0151 734 7555



Specsavers

One voucher per person at named Specsavers store only. £100 discount only valid on hearing devices from Specsavers Advance Premium, Super and Elite product ranges. Excludes all batteries and accessories. Subject to suitability and availability. Cannot be exchanged for cash. Cannot be used in conjunction with any other offer or voucher. Non-refundable or transferable on already purchased products. Voucher must be presented in store at the time of purchase. Offer valid until 31 July 2026.



meet the advertisers

*Some of our advertisers tell you
a little more about their businesses*

NORTH WEST DRY ROT

North West Dry Rot are one of Liverpool's leading experts in damp and timber treatments. Whether you have just bought a property with damp issues, are selling and want to get the best price, or you need to make repairs to an existing property, we are the team to call.

Our team has been supporting buyers, sellers and owners since 2020 and is well-known in the area for providing quality services at affordable prices.

With damp repairs and preventative treatment, it is essential that the cause of the problem is properly identified. Backed by over 25 years' experience, our damp proofing specialists will be able to provide an effective, long-lasting solution. Our damp treatments and waterproofing come with a competitive 20-year guarantee, which is recognised by all mortgage lenders as proof of completion.

Get in touch with our team today to book your free initial assessment.

Got any questions? Be sure to check out our helpful FAQ guide on www.northwestdryrot.co.uk

Please ring 0330 133 3266



CAPITAL KITCHENS & BATHROOMS

At Capital Kitchens and Bathrooms, our mission is to bring your ideal kitchen or bathroom to life. Based in Liverpool, Merseyside, we handle every detail - from flooring to lighting - for a smooth, start-to-finish experience.

Our in-house team of skilled tradesmen ensures personalized, professional service, with no need for subcontractors. Most bathroom projects are completed in just 3 - 4 days, combining efficiency with top-quality results. With over 40 years of industry expertise, we're a trusted leader for kitchens and bathrooms that Liverpool and Merseyside residents can rely on.

IF IT'S A NEW KITCHEN YOU ARE CONSIDERING

Enhance your home's value and style with a beautifully crafted kitchen from Capital kitchens and Bathrooms. Our experienced team handles every detail, from fitting your new kitchen with precision to removing and disposing of the old one, ensuring a smooth, hassle-free process.

We leave your space clean, safe and ready to enjoy from day one. Specialising in premium kitchen refurbishments, we combine functionality with elegant design, creating a space you'll love and adding lasting value to your home.

IF IT'S A BATHROOM YOU ARE CONSIDERING

From classic Victorian charm to sleek modern luxury, we bring your bathroom dreams to life.

Whether it's a spacious walk-in shower, a stunning freestanding bath, elegant suspended ceilings, or beautiful tiling, our skilled team works closely with you to design a bathroom that reflects your unique style and enhances your home's look and feel.

With a commitment to quality and meticulous attention to detail, we handle every step - from the initial concept to the final installation - ensuring a smooth, stress-free process and a bathroom you'll enjoy for years to come.

What are you waiting for ring 0151 486 0123 for a free quote now!

Opening hours

Mon -Fri: 8:30am - 4:30pm / Saturday: 9am - 4:30pm

Capital Kitchen and Bathroom Showroom

Unit 9b Hunts Cross Shopping Centre, Liverpool, L24 9GB

Tel: 0151 486 0123 Email: capitalliverpool@aol.co.uk

"I'M FINE" - STARTING THE CARE CONVERSATION WITH A PARENT WHO'S RESISTING

Gavin Preston, Right at Home South Liverpool

Few conversations feel harder than suggesting to a parent that they might need a bit of help. The response is almost always the same: "I'm fine, love. Don't fuss." But behind that reassurance, you may have noticed the signs - unopened post piling up, food past its date in the fridge, weight loss, unexplained bruises, missed medication, or a house that was once spotless now looking neglected. Perhaps they've stopped their usual walk up to Woolton Village, missed church at St Peter's, or turned down the weekly trip to the Elephant for Sunday lunch.

Resistance usually isn't stubbornness. It's fear - fear of losing independence, of being a burden, or of being moved out of a home filled with decades of memories, often just streets away from where they raised you.

The key is to reframe the conversation entirely. Don't lead with what they can't do. Lead with what they want to keep doing. Most parents share the same goal: staying in their own home, on their own terms. A little support is what makes that possible. Paradoxically, accepting help now is often what prevents the crisis - a fall, a hospital stay - that forces bigger changes later.

Start small and start practical. A cleaner once a fortnight. Someone to walk with them to Woolton Woods or help with the shopping at Tesco. A half-hour companionship visit so you know mum's had a proper chat and a cup of tea that day. Frame it as something for you too: "It would give me real peace of mind." Parents who refuse help for themselves will often accept it for their children's sake.

Avoid the word "carer" early on if it sparks resistance. "A bit of help around the house" lands more gently. Let them meet the person, keep control of the schedule, and build trust slowly.

The goal isn't to take over. It's to put a quiet safety net underneath the independent life they've built - so they can keep living it, at home, for longer.

If you'd like to talk it through with no pressure, call the friendly team at Right at Home South Liverpool on 0151 665 0365. We're local, we understand Woolton, and we're always happy to listen first.



PURE THERAPIES & AESTHETICS

Discover Excellence at Pure Therapies in Childwall, for over 16 years, Pure Therapies has been a trusted name in Childwall, South Liverpool, dedicated to helping you look and feel your best. With thousands of 5-star reviews, our commitment to excellence is reflected in every treatment we offer.

Whether you're seeking beauty treatments, advanced laser skincare, rejuvenating Japanese Head Spa, micro-needling, anti-wrinkle injections, or more, our team of highly trained experts provides personalised care in a warm, friendly, and professional environment.

We have an offer for our popular Head Spa which includes a bespoke facial hot oil scalp massage and conditioning treatment - 60 mins @ £59 or the Deluxe 75 mins @ £79

At Pure Therapies, your comfort and satisfaction are our top priorities.

Join the many clients who trust us for their beauty and wellness needs.

Call us today at 0151 722 3456 or visit our website www.puretherapiesandaesthetics.co.uk

Experience the difference- because you deserve it!



Support our local community... support our local businesses



BIRKENHEAD SCHOOL



Birkenhead School Announces Free Transport for Liverpool Students

Travel to award-winning independent school made easy

Birkenhead School - named North West Independent Secondary School of the Year 2025 by The Sunday Times - has announced an exciting new initiative offering free transport for Liverpool-based students, making it easier than ever for families across the region to access its outstanding education.

Located just 15 minutes from Liverpool city centre, and with more families than ever from South Liverpool choosing Birkenhead School, the School is ensuring that families across the Mersey can easily access its exceptional education and wide-ranging opportunities.

From September, free transport on the School's bespoke bus services will be provided for all primary pupils for the duration of their primary education in Prep, ensuring a smooth and supportive start to their educational journey.

In addition, new entrants joining Birkenhead School into Seniors (Year 7 to Upper Sixth) will benefit from a year of free transport.

Currently, the School operates two dedicated bus services serving South Liverpool, offering a convenient and safe daily journey for pupils. With demand for places continuing to grow, this initiative further strengthens Birkenhead School's commitment to supporting Liverpool families and broadening access to its exceptional provision.

"More Liverpool families than ever are choosing Birkenhead School, drawn by our academic excellence, rich co-curricular offering, and strong community values," says Mr Paul Vicars, Headmaster. "By offering free transport, we're removing a barrier to joining our thriving School community. Average journey time for many of our existing students from South Liverpool is just over 30 minutes. We encourage families to come and join many of our existing families who use our bespoke Liverpool travel network each day. This initiative builds on our established provision and highlights our on-going commitment to accessibility and convenience."

This initiative complements the School's ethos of providing accessible, values-driven education, combining academic rigour with personal development and exceptional opportunities - now with even greater convenience for Liverpool families.

The School is oversubscribed for Seniors entry, so families are encouraged to join in Prep or to attend the Seniors Assessment Days for Year 5 pupils held in June.

For more information about Birkenhead School, admissions, and transport routes, please visit www.birkenheadschool.co.uk



SBW LAW

Leading the Way in Data Breach Claims

In an increasingly digital world, the risk of personal data being exposed, misused, or unlawfully accessed has never been higher. Individuals and businesses alike face growing concerns about privacy and security, making expert legal support essential when breaches occur. SBW Law has emerged as a trusted authority in this field, offering a specialist Data Breach service designed to help clients secure justice and compensation.

SBW Law is a multi-award winning law firm with a strong reputation for delivering client-focused legal services across the UK. Known for its approachable and results-driven team, the firm has received industry recognition for its commitment to excellence, including accolades such as “Legal Firm of the Year 2025” and “Litigation Law Firm of the Year 2026” This recognition reflects the firm’s broader ethos: combining legal expertise with clear communication and a genuine dedication to client care.

SBW Law has also achieved recognition beyond client testimonials. The firm is ranked by Review Solicitors as the Number 1 law firm in the UK for IT & Intellectual Property Law, underscoring its authority in areas closely linked to data protection and digital rights. This distinction reinforces SBW Law’s position as a leader in handling modern legal challenges, particularly those arising from the rapid growth of technology and online services.

Data breaches can arise from a variety of situations, including cyberattacks, human error, or organisational negligence. When personal information - such as financial details, medical records, or contact data - is exposed, the consequences can be severe, ranging from financial loss to emotional distress.



SBW Law provides specialist support to individuals affected by such incidents, guiding them through the legal process and helping them pursue compensation on a no win, no fee basis.

The firm’s success is further reflected in its strong track record of results. SBW Law has recovered millions of pounds in compensation for clients and maintains a high rate of cases settled before trial. This combination of efficiency and effectiveness is particularly valuable in data breach cases, where clients often seek swift resolution alongside fair compensation.

Ultimately, SBW Law stands out as a forward-thinking legal practice that understands the evolving nature of risk in the digital age. Its multi-award winning status, top ranking in IT and Intellectual Property Law, and dedicated Data Breach service make it a compelling choice for individuals seeking expert legal support.

As data continues to play a central role in everyday life, firms like SBW Law are essential in ensuring that individuals’ rights are protected and upheld.



Margaret's Review

NJ KITCHEN APPLIANCE REPAIRS

Nick has been advertising in both my magazines L25 Woolton Times and my South Liverpool Times for the past 3 years. I can highly recommend him for all your Kitchen Appliance Servicing and Repair requirements.

He recently visited us as we had a problem with my LG washing machine, I rang him to explain the problems I was experiencing with the machine and he was able to give me an appointment within 2 days - he rang when he was on his way and arrived on time, with his pleasant and courteous manor and resolved the problem – a blocked filter.

Machine now repaired and a great job completed!

If you experience any problems with all your White Goods Kitchen Appliances needing either servicing or repaired give Nick a call on 07731 446 115 check out his website on...

www.njdomesticsltd.co.uk you will not be disappointed!



SPECSAVERS LIVERPOOL - ALLERTON

SPECSAVERS was Founded in 1984 on the Channel Island of Guernsey by optometrists Doug and Dame Mary Perkins, Specsavers is the world's largest privately owned eyecare and audiology company. Starting from their spare room, the couple revolutionized the market by offering affordable, fashionable eyewear. It operates a successful joint venture partnership model and is famous for the "Should've gone to Specsavers"

We want you to be completely happy with your purchase at Specsavers Opticians and Audiologists. If you have any concerns within 100 days of the date of your purchase, we will put it right.

Visit our in-store eye health and hearing specialists based at 160 Allerton Road L18 2DH. Our Liverpool - Allerton store offers eye health and hearing services Monday - Saturday: 08.30-17.30 and Sunday: 09.00-17.00.

EYE HEALTH SERVICES - 3D scanning technology is an optical coherence tomography scan (OCT) - charge applies, ask in store for more details. This scan helps us view the health of your eyes in greater detail.

HEARING TEST an opportunity for an audiologist to examine your ears and assess your hearing.

If you feel your hearing your hearing has changed pop into our store, we also offer Earwax removal.

Please ring 0151 734 7555 or go online for all your Specsavers appointments



THE VILLAGE CAT

We opened our first venue on Smithdown Road back in 2017 and over the past 9 years it's grown and evolved into a great place for good beer and even better vibes! We now have Black Cat currently on 3 venues- Smithdown Road, Rose Lane and Parr Street in the city centre.

All our venues are welcoming, inclusive space for everyone, Black Cat has had some great nights at Smithdown, and the most relaxing sun soaked afternoons at Rose Lane.

Our last venue in Parr Street opened in October 2025 and this month of May 2026 we are opening another in Woolton Village. The owners of Black Cat Pub are Andy Scott, Chris Welsh and Rich Midgley. Brought together by a love of Beer, Music and never having a day off!

We're all incredibly excited to open our 4th venue in the heart Woolton Village; it's been a dream of ours for years.

Although it's part of the Black Cat family, Woolton will be a slight departure from our usual style as we go for a more homely, country vibe under the name The Village Cat. We'll still have the same great range of craft and cask beers, amazing wines hand-picked by R and H Wines on Allerton Road, and cheeseboards from the Woolton Cheese Company. Not to mention delicious Crosby Coffee and Cakehole Cakes.

We will also be opening our back garden bar and planning amazing Garden Tap Takeovers during the summer months with local breweries from Handyman's to Azvex and more.

Much like our other venues, Woolton will also operate as a craft beer off licence so you can take some amazing beers home with you that you wouldn't find in most shops!

We will have Quiz nights as these are some of our favourite nights of the week! We'll be hosting a weekly quiz with prizes from bar tabs to bonkers nonsense. Win £40 in beer tokens, or a copy of Jimmy Corkhill's Autobiography - who knows!?

Gift Cards will be available - The best present for any beer aficionado. These can be used in all four venues!

Margarita Mondays will be hitting Woolton at last! Two margaritas for £10 all day, every Monday! Plus we'll have our Cask Club Cards, buy 8 pints get 1 free (and the same for coffee too!). We will have regular brewery tap takeovers and tastings, where you can meet the brewers and find out the secrets behind your favourite new beers.

Our Smithdown venue is a popular coffee shop by day, and a pub by night - and we'll be carrying that on at Woolton too. It's a great space for a coffee whether you're chatting to friends or getting your work done (a good excuse to get out of the house!). We serve incredible Cakehole Cakes - "Boss Cakes that happen to be vegan". As well as cheeseboards and charcuterie boards from local suppliers.

Come along and meet us shortly at THE VILLAGE CAT 5 / 7 Allerton Road L25 7RA

BLACK CAT!



Support our local community... support our local businesses



Need an Electrician?

ROB LEC

Electrical & Mechanical Services

- Sockets • Re-Wires
- Inspection & Testing
- Outside lighting
- Electric Showers
- Electric Cookers
- Burglar Alarms Installed
- Automated Gates



INSTALLATION & REPAIRS

Fault Finding & Rectification

Free Estimates - No Job too Small

Call Keith: 0790 6318 195

or Callum: 0742 5192 888

BLOCK PAVING
IMPRINTED CONCRETE
DRIVEWAYS
TARMACING (RED & BLACK)
SLABBING
GRAVELLING
CONCRETING
PATIOS
DROP KERBS
GENERAL POWER CLEANING
 We now do multi-color
Resin Driveways!
www.colourstonepaving.co.uk

Colourstone Paving Ltd
 Paving Contractors

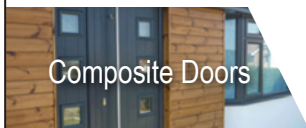
Proud members of
Checkatrade.com
 where reputation matters

FREEPHONE: 0800 474 8875
OFFICE: 0151 909 2720
 UNIT 13 IMPERIAL COURT EXCHANGE ST. EAST, L2 3AB



merseysideGLASS

WINDOWS | DOORS | CONSERVATORIES | ROOFLINE



OVER 30 YEARS EXPERIENCE
OF BRINGING FIRST CLASS
CHOICE, QUALITY & SKILL
TO EVERY INSTALLATION

0151 734 5550

10 YEAR GUARANTEE

info@merseysideglass.co.uk

www.merseysideglass.co.uk

Springwood House, 4 Rose Lane, Mossley Hill, L18 5ED

Memorials In The Park

As well as being a place for fun and games, for the appreciation of nature, for walking and talking with friends, the park is a place for quiet thought and contemplation, which is reflected in the many benches bearing memorial plaques to those who have died.

There are also memorials which are part of the history of the park.

The earliest of these is the grave of three horses belonging to the Walker family, who built the Mansion House in 1828. Commemorated are two ponies - an un-named roan [died 1837, aged 22] and Beppo [died 1826, aged 20] - and a bay horse, Waterloo [died 1837, aged 28]. The ponies were probably used by the children of the family, whilst Waterloo was the mount of their father. The grave is next to the path leading from the Mansion House to the Allerton Oak.

In the Nature Reserve there is a tall granite obelisk embedded in what was originally the lawn of Hart Hill House, the home of the Bibby family in the second half of the nineteenth century.

Fanny, the wife of John Bibby, was the daughter of

Jesse Hartley, who, as Dock Superintendent for Liverpool, revolutionised dock construction by building in stone rather than wood. He brought the stone from a quarry in Scotland, including the granite obelisk [now known as the Hartley Pillar] which commemorates both his life and his many outstanding achievements.

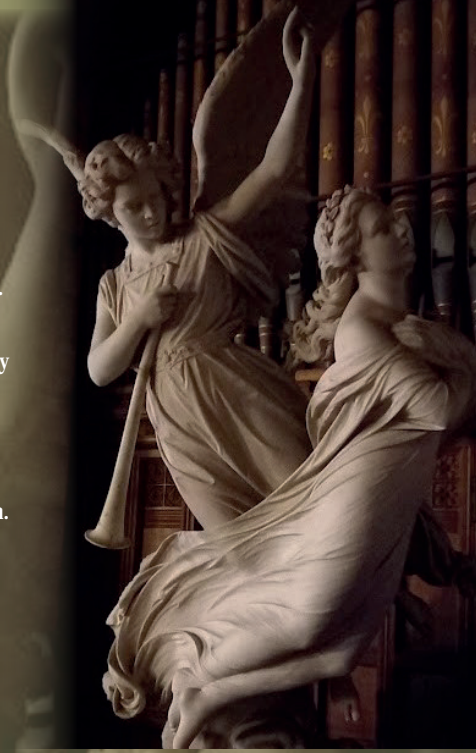
There is a further Bibby family memorial which, although not in the park, has a close connection with it. Sadly, Fanny Bibby died in 1856 at the age of only 46 years. Her husband, in her memory, built the beautiful All Hallows Church, just down the road from the park. It is dedicated to All Hallows, as Fanny's birthday was 31st October. Within the church are memorials to local men who died in the First and Second World Wars, including the two grandsons of John Bibby, both of whom died in France in 1915.



Our next memorial is to the valiant black Alsatian dog, Jet, who was born in 1942 and raised in nearby Garth Drive. After training at the War Dogs School, Jet was sent to work with the Civil Defence Corps in London, where he assisted during the Blitz in the rescue of 150 people trapped under bombed buildings. For this he received the PDSA's Dickin Medal, the canine equivalent of the Victoria Cross. In 1947, when an explosion occurred in the William Pit in Cumbria, in which 104 men died, Jet was taken into the shattered mine to carry out rescue work. His bravery was recognised by the award of the RSPCA's Medallion of Valour.

Jet then returned to his home in Garth Drive, where he died in 1949. His grave and memorial are in the sunken area in the Flower Garden. The playground in front of the Mansion House is our last memorial. It was dedicated by Sir Paul McCartney to the memory of his wife, Linda, following her death in 1998 at the age of 56.

The playground has been a source of delight for many hundreds of children and is now being extended and refurbished by Liverpool City Council.



FORTHCOMING EVENTS

DAY TRIP TO SHUGBOROUGH HALL [N.T.]

Thursday 21st May

[contact nadine.taylor@live.com to book]

NATURE RESERVE OPEN DAY

as part of the Harthill Festival

20th June, 11am - 3pm

NATURE RESERVE OPEN DAY

for National Garden Scheme

19th July, 11am - 4pm

Dear Resident I hope you are well and looking forward to the summer ahead of us,

Speke Hall Road Update

In my last article I reported on the roadworks now under way on Speke Hall Road where the Junction at the Asda supermarket will be improved and hopefully made safer. The roadworks will then continue with road resurfacing from the Asda junction towards Speke Boulevard.

The council says:

“The works that follow will see sections of the road resurfaced, drainage improved, traffic signals and street lighting upgraded at key junctions, and pavements and pedestrian crossings improved to make the route safer and more accessible.”

This work is being delivered by Aureos, Liverpool City Council’s contractors and will cost £5.2 million, which is a significant amount of money. The Asda junction does need to be made safer, but some of these millions should be spent on improvements to address the dangerous junctions headings along Hillfoot Road heading towards the Simpson Ground football pitches.

At a meeting with Highways Department officers, I urged them to reconsider the need to resurface the stretch of Speke Hall Road towards Aldi and instead to address the serious accident hot-spots in this locality: the junction by the Hillfoot Pub, the junction of Springwood Avenue and Speke Hall Road; and the blind corner coming out of School Lane onto Hillfoot Road. I and many local residents see this as the most sensible approach in the interests of public safety, so it is a shame that my request was not supported by Labour councillors from neighbouring wards. I have recently been informed that the work on Speke Hall Road will include cutting back trees that are in poor health and need attention. The council also needs to address the trees along Hillfoot Road between the Hillfoot pub and Menlove Avenue where, as a result of no work being done for years, overhanging trees block visibility and make the junctions mentioned above even more dangerous. It is completely wrong that £5.2 million is being spent on one part of a major highway while another much more dangerous part of the same route gets nothing spent on it. I have made my views known to the council many times regarding the need for improvements on Hillfoot Road, so if you agree with me please email the key decision makers: liam.robinson@liverpool.gov.uk; andrew.lewis@liverpool.gov.uk; and andrew.mollon@liverpool.gov.uk

CAMPAIGN TO RE-OPEN 26 BED IN-PATIENTS WARD AT MARIE CURIE WOOLTON

I and fellow residents demonstrated outside the Marie Cure Hospice in Woolton on Saturday, March 21. I am calling on the government and the National Health Service to spend more on palliative care for the dying.

The 26 bed in-patient ward at the hospice on Speke Road closed down 18 months ago. Since then more than 1,800 people have been deprived of this service. A temporary 10-bed ward was opened at Broad green Hospital in January but is due to close in October.

I am campaigning to reverse the closure and reopen the permanent in-patient ward at the hospice on Speke Road Woolton.

People deserve respect and dignity in their final days and this is what they get as a hospice in-patient. Hospice provision is essential healthcare but unfortunately the NHS funds only a small fraction of it. The charities that run hospices rely on donations from members of the public who raise money with everything from bake sales to parachute jumps.

The Marie Curie Hospice on Speke Road is still very busy, providing much needed outpatient care, wellbeing support and home visits and the generous Merseyside public continue to support it by donating their hard-earned cash.

But nationally, two in five hospices are making cuts and 380 beds have been lost in a year, according to Hospice UK. Dedicated staff have been made redundant.

Palliative care faces a £310 million shortfall, and there has been an over-reliance on charitable funding, which is inherently unsustainable.

As a local councillor, I urged members of the public to write to Liverpool City Council Leader Liam Robinson, to their MPs, to the Prime Minister and to Health Secretary Wes Streeting to urge them to allocate more core funding to hospice care.

The Marie Curie Hospice in Woolton is not the only one to be hit by the lack of funding. At Willowbrook Hospice in St Helens, the 10-bed in-patient ward alone costs 3.8 million per year to run and only 30% of their funding comes from the NHS, so the remaining 70% must be raised locally. In one year they have had just over 1,000 patients.

Demand for palliative care will increase by between 25% and 47% in England and Wales by 2040, according to a widely cited study published in BMC Medicine.

Hospice leaders report rising costs, workforce shortages and potential closures at the very moment when demand for their services is growing fast. We really do need better core funding for hospices and better provisions for hospice staff who do a remarkable job. We all have the right to live and die with respect and dignity.

Proud to Support Woolton Community Life

I am pleased to report that again this year I was able to support Woolton Community Life with Local Neighbourhood Funding to support their work and provide many fun events for the people they support. I do love to attend these events, such as the recent lunch at Woolton Golf Club. It was great to meet and chat with so many people from this charity which does great work to provide a lifeline of companionship for members of our community who would otherwise be isolated and alone.

Please don't hesitate to get in touch if you have any concerns that you wish to draw to my attention, or if you are isolated and need help.
Best wishes,
Mirna



COUNCILLOR MIRNA JUAREZ

INDEPENDENT MEMBER OF LIVERPOOL CITY COUNCIL FOR
MUCH WOOLTON & HUNTS CROSS WARD

EMAIL: MIRNA.JUAREZ@LIVERPOOL.GOV.UK
TELEPHONE: 01 51 448 9393 OR 07954 434 476



The Friends of Reynolds Park

THE DAHLIAS LAST YEAR IN THE WALLED GARDEN

Sunday July 12th is the date for the Woolton in Bloom open gardens Sunday and we will be in our spectacular Walled Garden with information about Reynolds Park and have brochures on sale for entry into some lovely gardens in the Woolton area that afternoon. As Reynolds Park is a public park there is no charge to view the Walled Garden. The Friends have provided new 50 dahlia sticks that will provide support for the great number of spectacular dahlias in the Garden. It is sad to have to report that donated memorial benches are being moved and left behind bushes in the garden by bike gangs who are leaving copious amounts of litter and evidence of drug taking. Parents if you know that members of your family are involved in this, please advise then that this is totally unacceptable. Liverpool security services have been notified and be aware that serious action will be taken against any person involved.

**www.friendsofreynoldspark.co.uk :: [facebook.com/ Friendsofreynoldspark](https://facebook.com/Friendsofreynoldspark)
twitter.com/reynoldsparkfrs :: instagram.com/reynoldsparkfrs**

SHARED READING FOR NEW PARENTS



**Wednesdays
10am-11.30am**

Experience the joy of grown-up stories, with your little one in tow.



Arts Council England, The Reader, Scan to find out more/visit thereader.org.uk

**JOIN US FOR OUR
MOSSLEY HILL FESTIVAL**

We're back! Mini Fest 2026

**SATURDAY
27TH JUNE
11AM TO 7PM**

free entry

SPECIAL GUEST

**MOSSLEY HILL
CHURCH
ROSE LANE
L18 8DB**

Save the date!



CAN YOU TAKE THE HEAT?

FIRE WALK - JUNE 19

6pm - The Bradbury Centre L14 2EP




Join us or sign up!



Your LOCAL FARMERS MARKETS

Woolton Village
2nd Saturday of the Month
13th JUNE 8am-2pm

Allerton Rd / Garthdale Rd
3rd Saturday of the month
20th JUNE 8am-2pm

Lark Lane
4th Saturday of the Month
27th JUNE 8am-2pm



PLEASE SUPPORT YOUR LOCAL MARKETS

ULTRA DEVELOPMENTS LTD

**Extensions • Loft Conversions • Garage Conversions
Conservatories • Orangeries • Porches • Vestibules
uPVC Windows • Tiling & Flooring • Gas Fitting
Roofing • Joinery • Soffits & Fascias • Driveways**



We provide a high quality service with satisfaction guaranteed.
Our vast experience ensures we are a company you can trust.
We also pride ourselves on our after sales service.

07757 498 018
07710 632 132

www.ultradevelopments.co.uk
info@ultradevelopments.co.uk

 **0845 340 2677**



Capital
KITCHENS &
BATHROOMS

Capital Kitchens & Bathrooms

Unit 9, Hunts Cross Shopping Centre, Speke Hall Road L24 9GB
Telephone: 0151 486 0123

capitalkitchensandbathrooms.com

*Call in to see us
in the
ASDA Mall*

Bathroom Packages starting at £7999

includes...

- 1200 800 tray & cubicle or 1600 x 700 with wet glass
- 550 Vanity & Basin
- Chrome Basin mono tap
- 1200 x 500 straight chrome towel warmer
- W.C.
- Chrome double headed shower
- PVC Ceiling with LED Lights
- Fully tiled (24 yds ceramic tiles included)
- All plumbing & dry lining
- All work carried out to high standard
- All waste removed

99% of bathrooms completed from start to finish in approx 3 to 4 days



Kitchen Packages from £5000 including...

- Rip out existing kitchen
- All electrics and plumbing work
- Bond Splash-Back area
- Rigid 18mm Units
- Doors integrated 22mm Gloss or Matt
- Spectra curved edge worktops
- Candy Fan Oven / Gas Hob / 60cm Chimney
- Caple sink with mono bloc tap
- Tiled floor - 10 yards tiles
- Tile Splash-Back area (6 yards)

PRICES AVAILABLE ON REQUEST

Fully skim and tile kitchen
Extra appliances ie Fridge/Freezer/Washing Machine etc
Topshape square edge or Quartz Worktops
Skimmed ceiling or UPVC ceiling with LED lights

All work carried out in less than two working weeks



The Gateacre Society



*Guarding the Past
Safeguarding the Future*

BEAR AND STAFF

Soon to be transformed into a Hickory's Smokehouse, the Bear and Staff has a history that predates the nearby chapel and reflects centuries of local life. The establishment has been known by several names over the years, including The Bear and Ragged Staff in 1773, and later The Bear Inn and Bear Hotel.

The pub occupies a prominent position on Gateacre Brow and close to the junction of Grange Lane and Halewood Road, on the historic route from Hale and the Mersey to West Derby. This location would have made it a welcome stopping place for travellers making their way between settlements - proof that the importance of good hospitality never truly changes.

The Bear and Staff's long history is peppered with colourful incidents. In July 1890, Samuel Jones of Cuckoo Lane was working as a waiter at an Oddfellows' event when his coat, valued at 60 shillings, was stolen. The culprit, Isaac Killian of Roddick Street, pawned the coat for just 4 shillings and sixpence. He was identified by the pawnbroker and subsequently sentenced to 14 days in prison - a punishment that seems particularly harsh by modern standards.

Nearly half a century later, in October 1936, the Bear and Staff Hotel once again found itself at the centre of local drama when police investigated illegal betting activity on the premises. George Wilson, of York Cottages, was observed recording bets in a blue notebook. Both Wilson and the licensee, Sam Scott, were fined because of the investigation.

These are just two of the many tales recorded during the long and varied history of the Bear and Staff. Undoubtedly, many more stories remain to be discovered, adding further richness to the heritage of this well-known local landmark. The Bear and Staff is currently being renovated and will become a Hickory's Smokehouse in the near future.



GATEACRE SOCIETY TALKS

March and April proved to be particularly successful months for the society, with two very well attended and thoroughly engaging talks that were greatly enjoyed by members.

In March, Barry Humphries delivered a fascinating presentation on the history of the Cunard Line. He traced its development from its earliest days as a mail-carrying paddle steamer service, through Samuel Cunard's forward-thinking belief that steam power represented the future of maritime travel. Barry went on to describe the growth of Cunard's great ocean liners and the emergence of the magnificent luxury ships of the 1920s and 1930s. One striking detail highlighted was that in 1934 a three-day, twenty-hour transatlantic crossing could be undertaken for £53. The talk also covered the post-war 'golden age' of ocean travel, before concluding with the decline of large-scale liner operations following the rise of commercial air travel in the 1960s. It was a highly informative and absorbing talk, delivered with enthusiasm and clarity.

Later in the month, Ken Pye spoke on Blitzkrieg and its impact on Liverpool during the Second World War. Ken combined historical research with personal family memories, bringing a powerful and human perspective to the events he described. Particularly enlightening was his account of the internment camp at Woolfall Heath in Huyton, and the harsh conditions under which the internees were forced to live - an aspect of wartime history unfamiliar to many in the audience. Ken's talk was both moving and thought-provoking, prompting considerable interest and discussion.

Both events were extremely well received and demonstrated once again the strong appetite for local and social history talks that are informative, personal, and engaging.

**Please email for more information thegateacresociety@gmail.com
or visit our website: www.gateacresociety.co.uk**

MABLEY AUTOMATION

Installation • Repair • Servicing

Automated Gates | Access Control | CCTV Systems

Supply and installation of automated gates

Gates guaranteed for 2 years - parts and labour

Automate your existing gates for added safety and security

Please Call us on

0151 493 2127 or 07973 284 590

alternatively you can E-mail: info@mableyautomation.co.uk

PECAN
Professional CCTV Products

**VX
VIDEX**
Video Door Entry Systems

AFI
Automated Gate Systems

www.mableyautomation.co.uk

UPVC Glazing Repair Specialist

Local, fast, reliable, expert repairs to all UPVC glazing & doors

Yale Doormaster™
Expert



Secured by Design



Police Preferred Specification

- UPVC door lock specialist
- Handles/hinges
- Door refurbishment
- Yale anti-snap cylinders
- Door adjustment
- Window handles/hinges
- Patio door repairs
- Misted units
- Letterboxes



Call Mark on

0151 722 7009 or 07879 815833

www.doubleglazingrepairspecialist.co.uk

MSB Woolton FC

It's almost season's end for Woolton FC and in our next newsletter I will fill everyone in with the respective league achievements and cup runs.

For now, we would like to congratulate our men's 1st team on their fantastic 3rd position at the culmination of their inaugural season in the North West Counties Division North. They actually reached the play off semi-final, in the hunt for promotion, only to be beaten on the day by a Maghull team who in fairness deserved their victory.

However, if at the start of the season someone had said this would be happening in front of over 500 supporters at Jericho Lane, I don't think anyone would have believed it. This achievement was the culmination of over 4 years of hard work not just by the coaches

within the adult sector and the players themselves but by the incredible people behind the scenes who collectively have held meeting after meeting. Planned in granular detail what was likely to be required and against a background of sometimes uncertainty, sometimes naivety but always for the right reasons. To keep people playing football to the best of their ability.

I have mentioned 'culmination' but perhaps this is the wrong choice of word as hopefully it's just the 'beginning.'

All successful businesses, sports teams and competitors need a good team behind them. People who care. People who go that extra mile following their own hard days at work and often struggling with the obstacle's life throws at them. Driven by a goal, Backed up with a faith. The desire to improve and get better is maybe a quality no longer appreciated as much these days. Woolton is and always has been a community club. Liverpool as a city is blessed with an abundance of good local sides with players who often do not realise how good they actually are. What Woolton has done has kept those players, looked after them with a backdrop of consistent training and an emphasis on fitness and blended it within a set up that hopefully will carry on producing dub grown players good enough to play semi-professional football and compete against established non-league teams.

Next season sees the 1st team return to their home at Simpsons. The ground-work replicates what has been done with the adult section in general. Steady building, tweaks all combined with the odd bit of stress and strain but next season within a stone's throw of the Camp Hill oak tree and beside the woods of Clarkes Gardens Woolton will be home.

It is also only fair that we thank all those people who turned up to support the team. The fantastic volunteers who marshalled the supporters and provided the food and refreshments and of course our brilliant, supportive sponsors without whom this season would have been an uphill struggle.

Who knows what that season holds? It's in the future and we don't know but rather than worrying it should be embraced because as we all know. The future could be bright.

Up The Woo!



We welcome players of all abilities, anyone interested in participating at any age group or level should initially either visit Camp Hill on a Saturday morning for mini-soccer. For all other age groups, please make contact via email enquiries@wooltonfc.org.uk or visit our website: www.wooltonfc.org.uk



Garden Maintenance

Can offer the following services throughout the year

- Regular Maintenance
- Lawns & Hedge Cutting
- Planting ● Weeding
- Ground Preparation
- Garden Clearances
- Tree Pruning ● Fence Painting
- Path/Driveway Cleaning
- Leaf Clearing
- Loose Stone Paths
- Turfing ● Lawn Treatments
- ALL GARDEN WASTE TAKEN AWAY

**For a Free Estimate call
James Loughran on
07748 476192**

Abbot's Lea School showcases commitment to developing talent from within

Abbot's Lea School is celebrating the career progression of its staff, highlighting the school's commitment to nurturing talent and supporting staff to progress their careers internally.

Over recent years, the Woolton-based school has supported a number of employees in developing their skills, gaining additional qualifications, and advancing into a variety of leadership, teaching and support staff roles across the school.

This approach reflects a strong focus on internal talent retention and career progression, ensuring that staff are given opportunities to grow professionally while continuing to contribute to the school community.

Many staff began their careers at Abbot's Lea School in more junior roles, and have progressed through training, mentorship, and hands-on experience into a range of more senior or new roles across the organisation.

Stacey Wilson joined Abbot's Lea School in 2018 as a part-time teaching assistant after returning from maternity leave. With encouragement and support, she moved into a higher level teaching assistant (HLTA) role, which strengthened her interest in teaching.

She was then supported to complete her PGCE teacher training while balancing family life, an opportunity she had once felt was out of reach. After successfully qualifying, she secured a teaching position and is now an early career teacher (ECT).

Stacey commented: "I genuinely love my job and feel very lucky to spend each day with such incredible children. It is especially meaningful that the students in my class have been with me throughout my journey – they have played a huge part in my development and my love of teaching.

"Looking ahead, I would like to keep developing, contribute to the future of the



school, and eventually support student teachers as a mentor."

A number of staff have followed a similar path and moved into teaching, including Richard Manley, Kelly Aldridge, Michelle McGawley, and Rebecca Ledward, all of whom began their careers as teaching assistants or in support roles.

Richard said: "The thing I adore the most about my job is seeing the small differences we make. It could be something as simple as a student learning a new word, asking for a new activity or being able to access a new space with staff support. It's seeing the difference we can truly make each day."

Chloe Biggins is currently undertaking teacher training through the Schools Direct programme, while Ben Owen joined the school as a teaching assistant and left in 2023 to complete his PGCE. He has since qualified and returned to Abbot's Lea School as a teacher.

Laura Cartwright also began her career at Abbot's Lea as a teaching assistant and progressed from class teacher to key stage leader, and finally to assistant headteacher, with responsibility for the primary department.

In addition, Jonathan Plant and Donal McGrath have both evolved within the school's Positive Behaviour Support provision, with Jonathan now a senior positive behaviour support assistant and Donal a

positive behaviour support assistant.

Jonathan said: "Abbot's Lea has supported me by giving me lots of opportunities for continuing my professional development. The school has also funded me to do a postgraduate certificate in Leading Positive Behaviour Support in organisations through the University of Northumbria."

Lisa Sharpe now serves as safeguarding manager, having developed through a range of pastoral and safeguarding positions within the school.

Headteacher of Abbot's Lea School, Mrs Ania Hildrey, commented: "Staff of Abbot's Lea School are our greatest asset, and I am incredibly proud of our colleagues. Those who have advanced their careers within Abbot's Lea School inspire us to see what can be achieved through hard work, commitment, and the right support. Investing in our staff not only benefits the individuals, but also strengthens the quality of education and care we provide as a specialist school."

Deputy headteacher, Mrs Emily Tobin, added: "I have had the privilege of watching so many colleagues develop in their practice, confidence and leadership, and this remains one of the most rewarding aspects of the role. Supporting staff as they grow professionally is every bit as fulfilling as seeing our students make progress; in fact, the two are inextricably linked."

Inspirational Liverpool Headteacher crowned Headteacher of the Year

The Headteacher of Abbot's Lea School in Woolton, Liverpool, has been named Headteacher of the Year 2026 at the esteemed Education Awards.

Mrs Ania Hildrey was honoured with the highly coveted accolade in Manchester on 24 April, at the Hilton Deansgate Hotel. The prestigious award recognises inspirational and outstanding headteachers from across the North West of England, who have made a significant impact. The judging panel looked for individuals who demonstrate exceptional leadership, innovation and dedication to improving outcomes for young people.

Mrs Hildrey stood out among nominees from across a variety of educational settings, reflecting her exceptional commitment to inclusive education and transformative leadership at Abbot's Lea School. Abbot's Lea School is an outstanding specialist school which delivers high-quality, holistic education for students aged three to 19 living with autism and other complex needs. Staff are committed to ensuring every young person is empowered to achieve their full potential. Mrs Hildrey was appointed headteacher in 2016. Under her leadership, the school has continued to evolve as a centre of excellence in autism education, research and professional development, supporting a culture of ambition, high expectations, inclusion and highly therapeutic practice. Her strategic vision and unwavering focus on student outcomes have led to significant developments in curriculum design, staff career pathways, and community engagement, transforming the lives of hundreds of students and families each year.

Central to her philosophy is to provide a civil service with a moral duty and commitment to never giving up on any students, no matter how complex or challenging their needs.

Speaking following the award an-



nouncement, Mrs Hildrey said: "I am incredibly humbled and honoured to receive this award. It reflects the dedication, passion, and expertise of our entire school community. Whilst it is an individual award, behind every leader is an army of superb staff, and this recognition belongs to all of my team, but also our wonderful students and their supportive families."

Cllr Joanne Kennedy, Liverpool City Council's cabinet member for employment, educational attainment and skills, said: "This is a hugely well deserved recognition for Mrs Hildrey and everyone at Abbot's Lea School. Her leadership is an exceptional example of Liverpool's commitment to inclusive, high quality education that puts children and young people first.

"Abbot's Lea is a truly outstanding school, and under Mrs Hildrey's guidance it has continued to raise aspirations, break down barriers and transform life chances for children and young people with autism and complex needs. "We are incredibly proud to see a Liverpool headteacher recognised at a national level, and I congratulate Mrs Hildrey, her staff, students and families on this remarkable achievement."

Corporate director of children and young people's services at Liverpool City Council, Jenny Glennard, added: "On behalf

of myself, my leadership team and everyone at Liverpool City Council, I would like to offer my warmest congratulations to Mrs Hildrey.

"I am absolutely delighted to see one of Liverpool's headteachers recognised nationally with the Headteacher of the Year award. This is a tremendous achievement and richly deserved.

"This recognition is a testament not only to Mrs Hildrey's outstanding leadership, but also to her unwavering commitment to improving the lives and life chances of children and young people. Her dedication, vision, and ability to inspire both staff and pupils exemplify the very best of education in our city."

The Education Awards 2026 were held in association with headline sponsor HSBC UK, alongside a distinguished group of supporting sponsors including Active Clinic, Aston University Birmingham, Birmingham City University, Dishoom, Education Expo, Education Summit, Greater Birmingham Chambers of Commerce, On Your Radio Solihull, Solihull Chamber of Commerce, and Talk Education.

The ceremony brought together education professionals, leaders, and stakeholders from across the UK to celebrate excellence and innovation within the sector.





WE DO TOO! Help us protect, improve and enjoy our village

The **Friends of Gateacre** is a group of local volunteers dedicated to making our village a place for everyone. We volunteer to ensure the village remains a safe, beautiful and thriving space for the community.

What we do:

- **Conservation:** Planting flowers in barrels, watering and de-weeding. Planting new trees and much more!
- **Improvements:** Raising funds for events and local improvements.
- **Community:** Organising litter picks, social meetings and local events.
- **A voice:** Working with the council to have a say in how the area is managed.



DO YOU HAVE AN HOUR OR MORE TO SPARE EACH WEEK?

VOLUNTEERS NEEDED

BEECHLEY STABLES RDA

ABOUT US

Here at Beechley Stables RDA we are committed to delivering riding lessons and equine therapies to those in our community with disabilities. We deliver a measurable impact in life enhancing areas such as physical ability, communication, relationship building and confidence.

CAN YOU HELP MAKE A DIFFERENCE?

WE NEED HELP WITH

- Grooming and Tacking up ponies
- Leading horses in sessions
- Side walking with riders
- Stable duties
- Fundraising
- Gardening
- Administration

We are looking for mature volunteers who would feel comfortable in supporting our participants. No experience required. Full training given. Flexible times. open 7 days a week. DBS check required.

Charity Number 1156129
Company Number 8668860

- LEARN A NEW SKILL
- MAKE NEW FRIENDS
- KEEP FIT
- BOOST YOUR CV

CONTACT US

BEECHLEYRDA@HOTMAIL.COM
OR 0151 724 4490
HARTHILL ROAD, ALLERTON, L18 3HU

To get involved e-mail kris.brown@liverpool.gov.uk

Like us on Facebook

Gateacre is a SPECIAL place

Will you HELP us to KEEP it that way?

GATEACRE VILLAGE
Liverpool

You can SHOW YOUR SUPPORT for what we do by joining the **Society**, or **TAKE AN ACTIVE PART** in our discussions and help with the running of the **Society** by joining our **Committee**

These are some of the things we discuss:

- Local planning applications -*
- Conservation Area policy - Traffic issues - Listed Buildings - Green spaces - Trees - Litter and leaves*
- Rights of Way - Pedestrian access - Pavements and potholes*
- Bus routes and facilities - Street 'clutter' - Local History*

Our book of old Gateacre & Belle Vale photographs and our tea towel of Gateacre Village landmarks are on sale at our public talks, which take place in Gateacre Chapel, Gateacre Brow L25 3PB

The Gateacre Society

Guarding the Past - Safeguarding the Future

CONTACT US
thegateacresociety@gmail.com
www.gateacresociety.co.uk



Australia's Best Hair Care In Woolton

Trio Gift Box
Shampoo, Conditioner &
Treatment only **£15.95**
(while stocks last)



Maria Eagle MP

A Strong Voice in Tough Times



LANDMARK RENTERS' RIGHTS BILL PROTECTS 11 MILLION RENTERS ACROSS UK

This month Labour's landmark Renters Rights Act came into force, giving extra protection to 11 million renters nationally, including 5,646 across my constituency. This is the most significant package of reforms to the Private Rented Sector (PRS) in over 40 years and will free millions of families who live day in, day out with the knowledge that they and their families could be uprooted from their home with little notice and minimal justification.

While the majority of landlords provide a good service, too many private renters are stuck in poor quality, insecure homes as costs soar. This Bill puts power back in renters' hands with the following rights improved:

1. No more Section 21 'no-fault' evictions - private landlords can no longer evict tenants without a valid reason.
2. Goodbye to fixed contracts - all tenancies in the private rented sector will roll on from month to month or week to week (depending on your arrangement) with no end date, giving renters more flexibility. Tenants can end them with two months' notice.
3. Fairer rent rules - landlords can only raise rent once a year and renters can challenge unfair hikes.
4. No more bidding wars - landlords must stick to no more than the advertised rent price.
5. One month's rent upfront, max - landlords can't ask for more.
6. No discrimination - it's now illegal to refuse tenants just because they receive benefits or have kids.
7. Pets welcome - renters can now ask to live with a pet and landlords must reasonably consider it.

For too long, families have lived with the constant fear of eviction, while young people have been outbid for the homes they need to start their lives. This week Labour has put that right. We promised to fix a broken rental system and we're delivering. This historic action will make renting fairer, safer and more secure for millions, so people can settle, put down roots and build their lives.

LABOUR STRENGTHENS COUNCIL POWERS TO TACKLE FLY TIPPING

The Labour Party has delivered on another of its Safer Streets promises by making fly-tipping, which blites so many communities, a crime with real consequences. We have given councils tougher powers to deal with offenders, with more fines, more CCTV and seizing and crushing the vehicles of repeat offenders. For years councils simply didn't have the power needed to combat fly-tipping, but with Labour that is changing. We're cracking down on waste cowboys and making life easier for everyone else. That's the difference Labour makes in government.

ADVICE SURGERIES

I am currently offering telephone, virtual or in-person surgery appointments.

To book an appointment please call my office on 0151 448 1167 or email me at maria.eagle.mp@parliament.uk



Rightio Plumbing & Heating

0151 268 6492

We work across **Woolton, Gateacre and all surrounding areas**

▶ **COMPETITIVE RATES** ◀

- ✓ Fast Response
- ✓ All Work Guaranteed
- ✓ Flexible Appointment Times

OUR SERVICES

- ✓ Boiler Breakdowns
- ✓ Boiler Servicing
- ✓ Boiler Installations
- ✓ Radiators & Pipes
- ✓ Tanks & Cylinders
- ✓ Toilets & Taps
- ✓ Leaks & Bursts
- ✓ Showers
- ✓ Clearing Blockages
- ✓ Pipework Replacement
- ✓ Gas Safe Certified

▶ **12 Month** ◀

Guarantee on labour!

Excludes blockages

▶ **OAP Discount** ◀

Available upon request at time of booking

Subject to Eligibility

▶ **1-2 Hour** ◀

Emergency Response time!



650921



**Roller • Faux Wood • Roman • Venetian
Wooden • Vision • Vertical**

**Domestic & Commercial • Excellent Landlord Rates
OAP Discount • FREE Quote / FREE Fitting**



Tel: 0151 423 0600

Web: www.ace-blinds.com

206 Liverpool Road, Widnes. Mob: 07745 976254



WOW - Women of Woolton WI - MAY 2026

WOW (Women of Woolton) Women's Institute is part of the National Federation of Women's Institutes. Our monthly meetings cover crafts, campaigns and issues of the day as well as providing a forum for an active and friendly social life.

We are so happy to have our Monthly Members meeting at Woolton Golf Club which has a beautiful function suite & accommodates our 100 members comfortably.

We have had some great speakers so far this year with a full program planned for 2026/2027 including well known - Lady Dodd. Our February to October meetings are held in the evenings 7pm -9pm. & afternoons in November and December 1pm-3pm. With no meeting in January and our AM in April our latest speaker was Tina Saunders – excellent speaker - her talk was titled an 'Embroiderers Tale' she was an expert in her field and worked for Jimmy Choo the shoe designer using her talents embellishing shoes and sandals, her fame came when she was employed at Buckingham Palace creating garments for the late Elizabeth 11. Our speaker for June is Sarah Satchell whose talk is titled 100 years of Hairstyles with one of our members having a new hair style.

We continue with small controlled groups at the Simpson ground covering various crafts during the year. We continue with reading, walking, quizzes, board games, art & ukulele tuition and our very popular Supper & Breakfast Clubs going from Strength to strength visiting many restaurants within Woolton Village & surrounding area throughout the year. Our latest being Breakfast was at The Warehouse on Speke Hall Road and our Supper club was @ Ying Wah in Woolton Village and attended by over 20 of our members – very popular and most enjoyable time was had by all.

Our new membership from March 2026 is currently full even with renewal of memberships we still have a waiting list of 18 ladies waiting to join - but you can still come as a visitor by pre arrangement.

theWI
INSPIRING WOMEN

Margaret Davies
WOW WI PR Committee Member
Woolton
margdaves_uk@yahoo.co.uk
mobile: 0797 770 6211

OTHER LOCAL WI'S:

CHILDWALL WI
Pam Tinnion

HALEWOOD WI
jenningham1952@yahoo.co.uk
contact the Federation direct
01722459020

KNOTTY ASH WI
Marj Sands
marjsands@hotmail.com
contact the Federation direct
01722459020

Remember...

*whatever you
need you can
get it locally!*

*...support our
advertisers*



HOLDI BAR, RESTAURANT & LOUNGE • 5B WOOLTON STREET WOOLTON VILLAGE

EXQUISITELY INDIAN

HOLDI Woolton



Holdi Woolton

We are Liverpool's finest Indian Restaurant... creating exquisite cuisine, in sublime surroundings for your pleasure. Nestled in the leafy suburbs of Woolton Village, we are a hidden treasure, situated between Sainsburys entrance and Lloyd's Bank on Woolton Street.

A Lasting Experience

Quite simply, we offer the best Indian cuisine with quality food available for takeout or to eat in. We offer mouth watering dishes that are true to the cuisine of India with secret ingredients used to bring you a taste like no other. Here at Holdi we use only the freshest authentic high quality ingredients including our own blends of ground spices for exquisite Indian cuisine everytime. This is why our customers not only come back time and time again, but why they also recommend us to friends and family. Book now to find out why everyone's talking.



BOOK ONLINE : HOLDIWOOLTON.COM



CALL TO BOOK : 0151 428 9894

Defibrillator Locations in Woolton & Gateacre

Automated External Defibrillator



An AED, or automated external defibrillator, is used to help those experiencing sudden cardiac arrest it's a sophisticated, yet easy to use medical device that can analyse the heart's rhythm and if necessary, deliver an electric shock, or defibrillation to help the heart re-establish an effective rhythm.

Of course you can and should request the assistance of trained medical professionals.

However when a 999 call is made for a cardiac arrest, time is of the absolute essence because for every minute defibrillation is delayed the odds of survival are reduced by approximately 10%.

So having access to an AED and knowing how to use one is critical if you don't already know how to use an AED then guidance will be given by the 999 call -handler and also on the device itself.

There are also free courses available to learn how to use an AED and provide lifesaving interventions.

CARE PHARMACY	Gateacre Park Drive, L25 5JY	24 hrs
COBDEN VAULTS	89 Quarry Street, L25 6HA	24 hrs
GRANGE LANE PHARMACY	183 Grange Lane, L25 5JY	24 hrs
ST JAMES CHURCH HALL	Church Road South	24 hrs
THE BLACK BULL PUB.....	9 Gateacre Brow, L25 3PA	24 hrs

RESTRICTED HOURS

WOOLTON PRIMARY SCHOOL.....	Out Lane , L25 5NN	Restricted Hrs
TESCO STORES LTD	Allerton Road, Woolton, L25 7SF	Restricted Hrs

Affordable advertising for every small business across South Liverpool in the L25 Woolton Times - Established over 22 Years!
and the South Liverpool Times
distributed across Allerton, Childwall & Wavertree

L25 WOOLTON TIMES
Established over 22 years!



SouthLiverpoolTimes ESTD 1981

...THE BEST FREE LOCAL MAGAZINES FOR SOUTH LIVERPOOL!

4000/5000 copies personally delivered bi-monthly to residences in each area
each magazine includes listings for **LOCAL** education, **LOCAL** health
LOCAL amenities, **LOCAL** mp's and **LOCAL** resident's articles

Please contact Margaret Davies (Editor) to advertise your business in one or both magazines

Call Telephone: 0797 7706211 Email: mdaviestimes@gmail.com

www.margaretpublishing.co.uk



• MARGARET'S MARKET PLACE •

M·E·S
WASHING MACHINE REPAIRS
0151 428 5933

JOHN WILLIAMS | JPWPRINT@GMAIL.COM | 07341 277421
 print and design matters

 LOGOS | FLYERS | BANNERS | CARDS | POSTERS

ROBLEC
ELECTRIC COOKER REPAIRS & INSTALLATIONS
CALL KEITH ON 07906318195

GROWING SUDLEY
 Beautiful nature-based Physical and Talking Therapy Rooms for hire.
 Not for profit eco project, affordable flexible rates
 growingsudley.com



EXPERIENCED JOINER & HANDYMAN
CALL TERRY ON 07765 075 242

M·E·S
ELECTRIC OVEN REPAIRS
0151 428 5933

ADVERTISE YOUR BUSINESS HERE FROM JUST £20 PER MONTH!



L25 WOOLTON TIMES
 Established over 24 years!

South Liverpool Times

L18 1L18

LOCAL ADVERTISING FOR LOCAL BUSINESS IN SOUTH LIVERPOOL ... TWO GREAT BI-MONTHLY PUBLICATIONS

WITH A CIRCULATION OF 4000/5000 THE MAGAZINES PROVIDE A COST EFFECTIVE WAY OF ADVERTISING YOUR BUSINESS OR SERVICE TO THE RESIDENTS OF LIVERPOOL L25, L15, L16 & L18.

DELIVERED DIRECT TO PRIVATE RESIDENCES & BUSINESS PREMISES ...getting direct to your potential customers.

PROFESSIONALLY DESIGNED & PRODUCED HERE IN MERSEYSIDE - SUPPORTING LOCAL BUSINESSES!

PRINTED ON QUALITY GLOSS ART PAPER ...giving the best impression for your business!

A digital copy can also be requested by email, a link is created for each edition and is sent out via social media allowing your advert to be viewed by a wider audience. Advertisers are offered "pay-as-you-go" facilities to help with cash-flow and **One Free editorial** in our "MEET THE ADVERTISERS" section, with any 3 adverts, giving you the opportunity to tell potential customers a little more about your business. You can advertise in one publication or "MIX&MATCH" in both! a **10% DISCOUNT** (off the final advert) is available when you take any three editions per year, rates are shown below, which we are sure you will find very competitive compared to other publications.

ADVERTISING RATES

	SINGLE EDITION	3 OR 6 EDITIONS
EIGHT PAGE 64mm x 45mm	£50	10% Off final advert
QUARTER PAGE 64mm x 93mm	£75	10% Off final advert
THIRD PAGE 132mm x 60mm	£85	10% Off final advert
HALF PAGE 132mm x 93mm	£125	10% Off final advert
FULL PAGE 132mm x 190mm [full page artwork size with 3mm bleed = 154mm x 216mm]	£190	10% Off final advert



FAVOURITE FULL PAGES

Pages subject to availability - Call to check
 Front & Back Covers @ £220 each
 Inside Front/Back Covers
 and Centre Pages @ £200 (each)
10% DISCOUNT OFF FINAL ADVERT when advertising in 3 or more editions

Please contact Margaret Davies (Editor) to advertise your business or event in one, or both, magazines
 Email: mdaviestimes@gmail.com | Telephone: 0797 770 6211 | www.margaretpublishing.co.uk

CREATE A GREEN LINE NEXT TO THE RAILWAY LINE

Article by Richard Kemp

All the way from Edge Hill Station to Liverpool South Parkway, Network Rail have been leaving a path of destruction as they have hacked away trees, some of them a hundred years old, alongside the main London Railway line.

Their consultation processes were appalling. For all that long route they held just one consultation meeting in Heath Road, Allerton. They told councillors about the event but not the public. I had to put out 500 letters myself to keep residents of Penny Lane Ward nearest the railway informed.

Nobody believes that a constant trimming of the trees alongside the line is not necessary. The last thing anyone wants is to have a tree fall on their house or an oncoming train, but Network Rail have gone too far. Instead of a good cut back they have gone for a chain saw massacre. All that is left are the tree stumps in the ground. Actually, that is not all they have left. They have left all the cut down trunks and branches as well.

What were nice green areas are now an ugly dumped desert which is causing much distress to most residents. The effects of the cut back are huge. The ends and back of many streets face this ugly site. The trees were a major filter taking toxins out of the air as they do anywhere and creating oxygen, but which is especially important in a city. They acted as a noise baffle to keep areas quiet that are now exposed to much noise that before went unnoticed. They acted as a green pathway for insects and small mammals. They acted as roosts for birds including at least one owl.

What has happened cannot be undone. So, I have launched a petition calling on Network Rail to work with local residents and schools to create a green line next to the railway line. In many parts of the route there is plenty of room for thickets of low-lying bushes, rather than towering trees. These would, within a couple of years, improve the greenery and therefore the appearance of the area. The project would recreate safe nesting environments for birds, act as an air filter and provide a pleasant backdrop to the area which would also improve air quality.

I believe that if Network Rail were to act with the council and other environmental players, we could turn disaster into triumph and make a nice, safe environment for people to live alongside and passengers to watch as they sped by. If anyone would like to help with the petition I can be contacted at richardkemp68@yahoo.co.uk

CLlr Richard Kemp CBE, Councillor for Penny Lane, Liverpool Lib Dem Housing Spokesperson
16, Dovedale Road, Liverpool L18 1DW.
Telephone: 07885 626913 Email: cllrkemp@bsky.social www.richardkemp.wordpress.com



NORTH WEST'S GO TO DAMP PROOFING, DRY ROT AND WATERPROOFING SPECIALISTS

North West Dry Rot Ltd has over 25 years of experience in dry rot, woodwork infestation and rising damp penetration alongside other waterproofing and damp treatments.

- **DRY ROT**
- **DAMP PROOFING**
- **WET ROT**
- **WOODWORM**
- **BASEMENT WATERPROOFING**
- **CONDENSATION CONTROL**
- **TIMBER RESIN REPAIRS**
- **CRACK STITCHING**



ALL OUR TEAM ARE WYKAMOL APPROVED CONTRACTORS

CALL US NOW 0330 133 3266

**FOR A FREE CONSULTATION OR TO LEARN MORE ABOUT
HOW WE CAN HELP YOU PROTECT YOUR HOME**

www.northwestdryrot.co.uk



Verified by Trustindex





HELLO

WOOLTON?

we're coming...



BLACK CAT!

A stylized, low-poly illustration of a street scene. The buildings are rendered in dark, muted colors (blues, greys, browns) with prominent yellow and orange highlights on the roofs and chimneys. The sky is a solid light blue. The overall aesthetic is modern and graphic.

the village cat

opening soon

beer • coffee • wine • cheese

5-7 Allerton Road
(former coast coffee)

@VillageCatWoolton

Multi-Award Winning Local Law Firm

#onyourside

SBW Law

- Medical Negligence
- Personal Injury
- Data Breach
- Fraud & Scam
- Housing Disrepair
- Tenancy Deposit

W: sbwlaw.co.uk

E: info@sbwlaw.co.uk

T: 0333 305 5005

11A The Matchworks Speke Road,
Garston, Liverpool, England, L19 2RF

